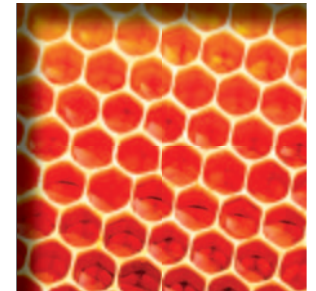
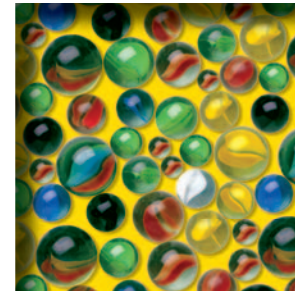
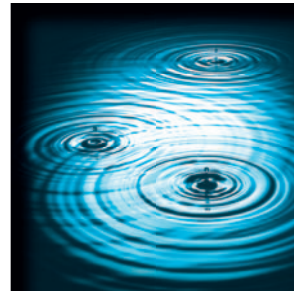
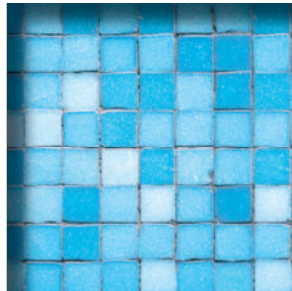


California
Everyday
Mathematics[®]



California “Waivered District” Test Data



Introduction

- Beginning in 2003, a number of districts in California received waivers from the state Department of Education to use state funds for the purchase of *Everyday Mathematics* curriculum materials.
- Wright Group has analyzed data obtained through public sources: both the STAR results and API calculations. This report summarizes those results in select *Everyday Mathematics* districts compared to California statewide results.
- The California Standards Test (CST) in mathematics is administered to all students in Grades 2 – 9. Students meet state mathematics standards when their results on the CST are at the proficient and above performance levels.
- The purpose of the Academic Performance Index (API) is to measure academic performance and growth. The API is a weighted index that summarizes the results of various indicators, including statewide tests.



Everyday Mathematics

All *Everyday Mathematics* “waivered” districts outperformed the California statewide results in the percentage of students who met state mathematics standards in 2006.

Del Mar Union Elementary	San Diego	90.2%
Hillsborough City Elementary	San Mateo	88.6%
Portola Valley	San Mateo	84.9%
Palos Verdes Peninsula Unified	Los Angeles	84.1%
Woodside Elementary	San Mateo	83.7%
Conejo Valley Unified	Ventura	76.8%
Poway Unified	San Diego	76.1%
El Segundo Unified	Los Angeles	75.1%
Glendale Unified	Los Angeles	66.3%
Saint Helena Unified	Napa	59.1%
East Whittier City Elementary	Los Angeles	52.8%
<hr/>		
	Statewide results	48.0%



Everyday Mathematics

In 2006, all *Everyday Mathematics* districts outperformed the state results on API scores as well.

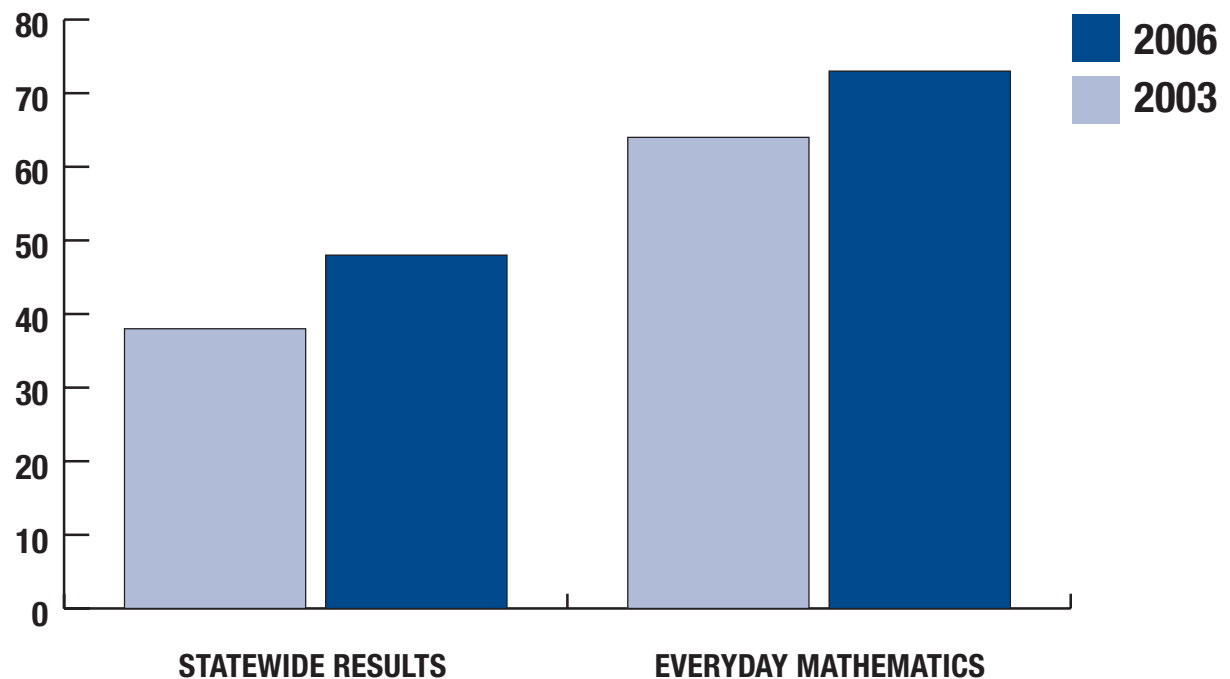
Hillsborough City Elementary	San Mateo	962
Woodside Elementary	San Mateo	949
Portola Valley	San Mateo	944
Del Mar Union Elementary	San Diego	941
Palos Verdes Peninsula Unified	Los Angeles	898
Poway Unified	San Diego	858
Conejo Valley Unified	Ventura	855
El Segundo Unified	Los Angeles	847
Glendale Unified	Los Angeles	804
East Whittier City Elementary	Los Angeles	766
Saint Helena Unified	Napa	765

Statewide results	720
------------------------------	------------



Everyday Mathematics

Among students in all *Everyday Mathematics* “waivered” districts in California, 73.2% were at or above proficient in mathematics, compared to 48% of the statewide results.



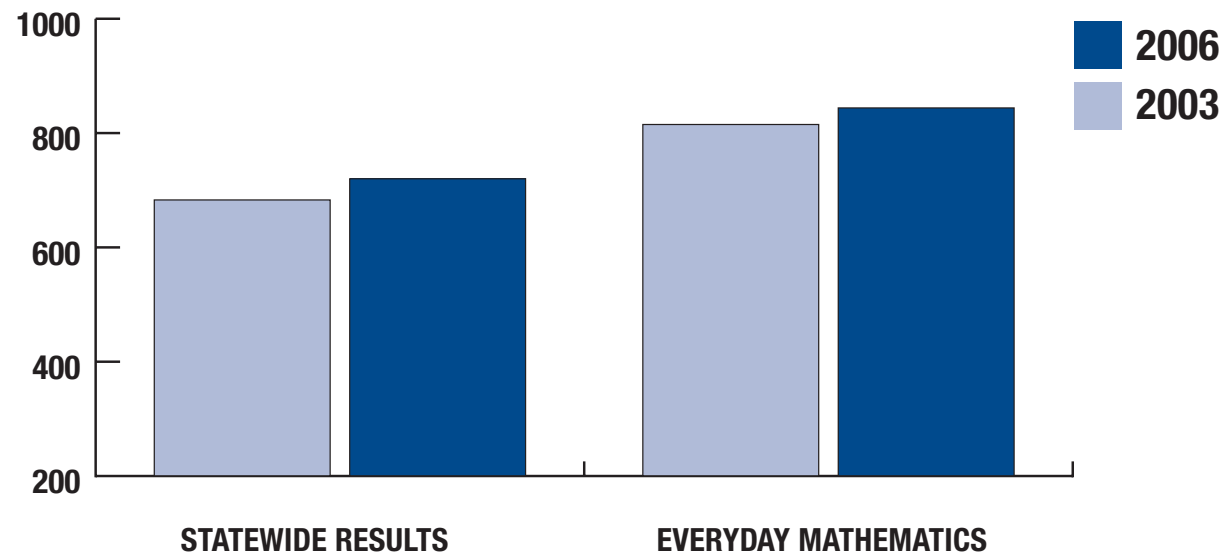
Everyday Mathematics

- Between 2003 and 2006, *Everyday Mathematics* “waivered” districts in California closed 25% of the gap in mathematics proficiency towards the No Child Left Behind goal of 100% at or above proficient by 2014.
- In the same time period, the state of California closed 15% of the gap in mathematics proficiency.



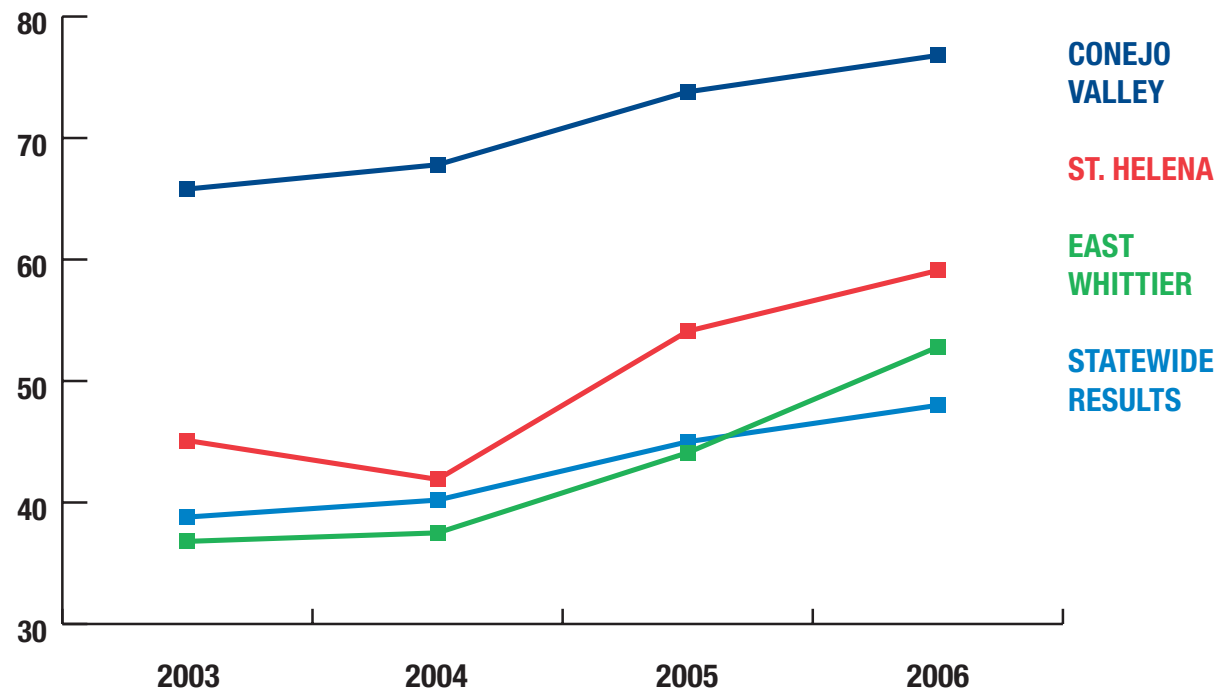
Everyday Mathematics

Among all *Everyday Mathematics* “waivered” districts in California, the average API score in 2006 was 844 versus 720 for the statewide results.



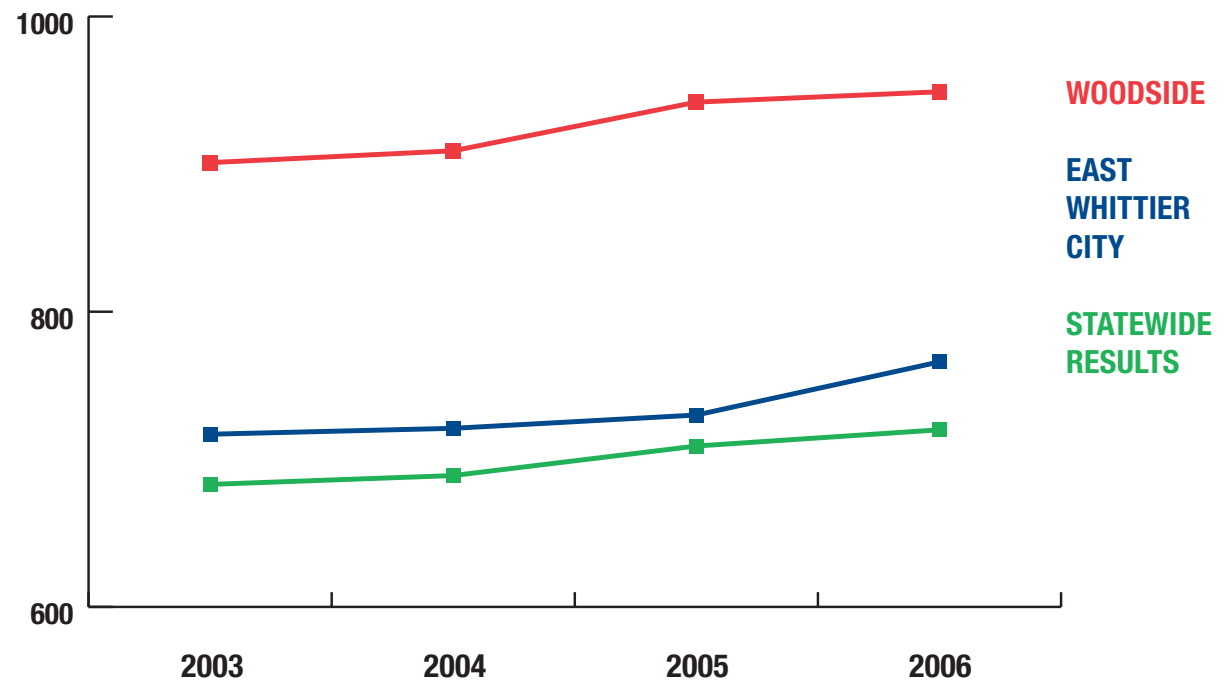
Everyday Mathematics

These *Everyday Mathematics* districts outpaced the statewide results in the growth of the percentage of students at or above proficient in mathematics.



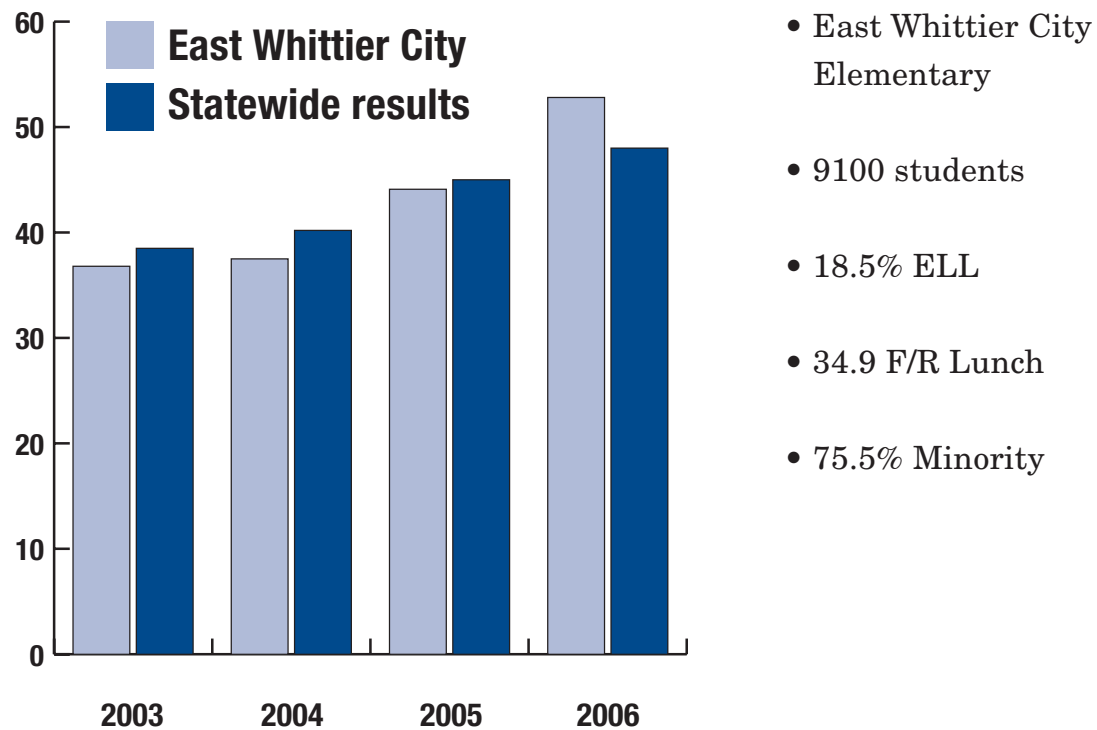
Everyday Mathematics

These *Everyday Mathematics* districts outpaced the statewide results in API growth.



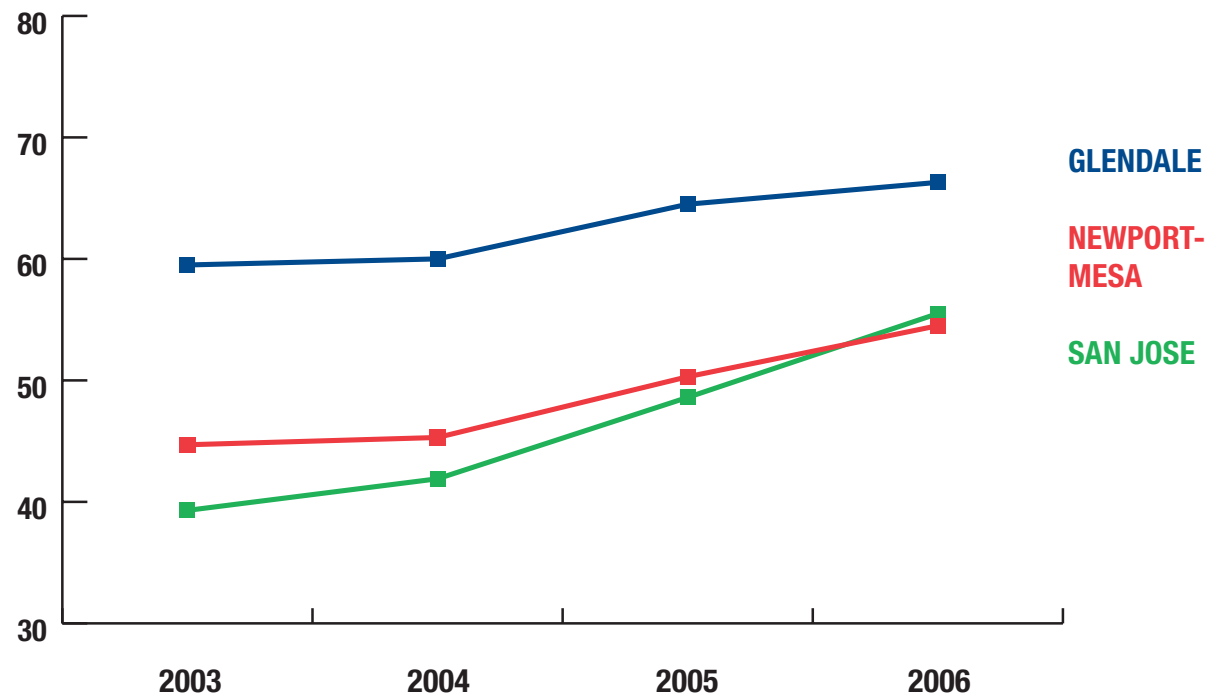
Everyday Mathematics

East Whittier City Elementary lagged the state in the percentage of students at or above proficiency in mathematics in 2003. In 2006, the district surpassed statewide results.



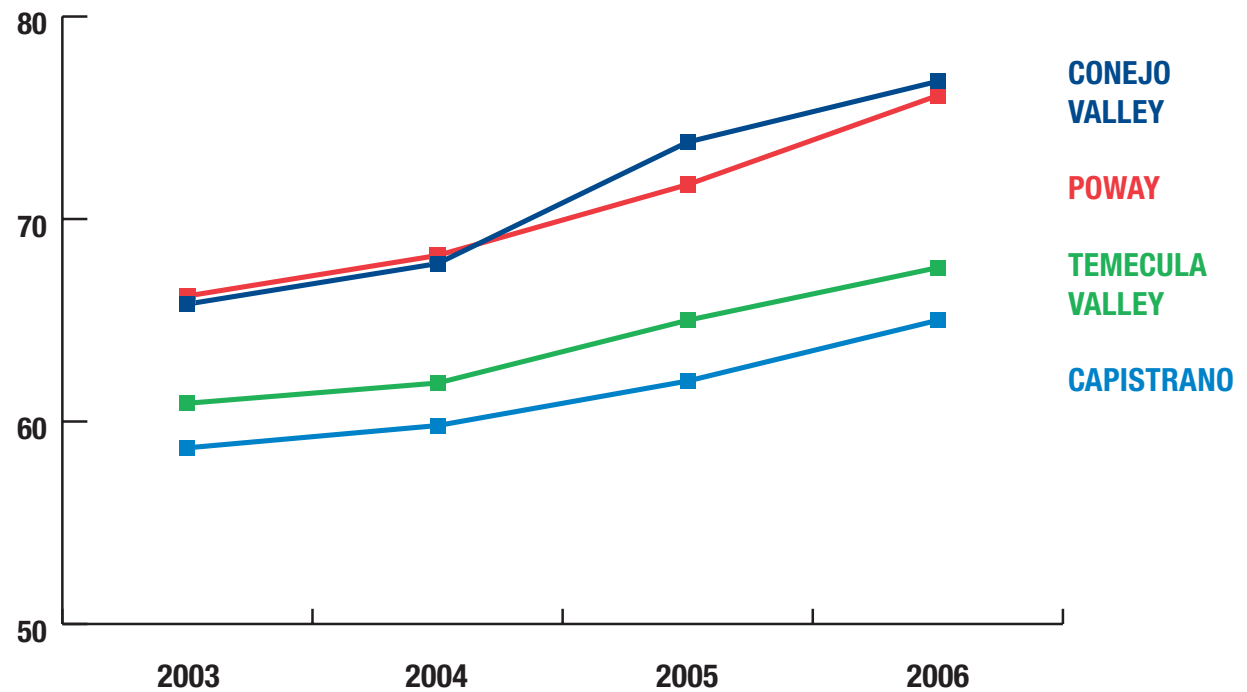
Everyday Mathematics

Against matched-comparison districts, a higher proportion of students in Glendale Unified were at or above proficiency in mathematics.



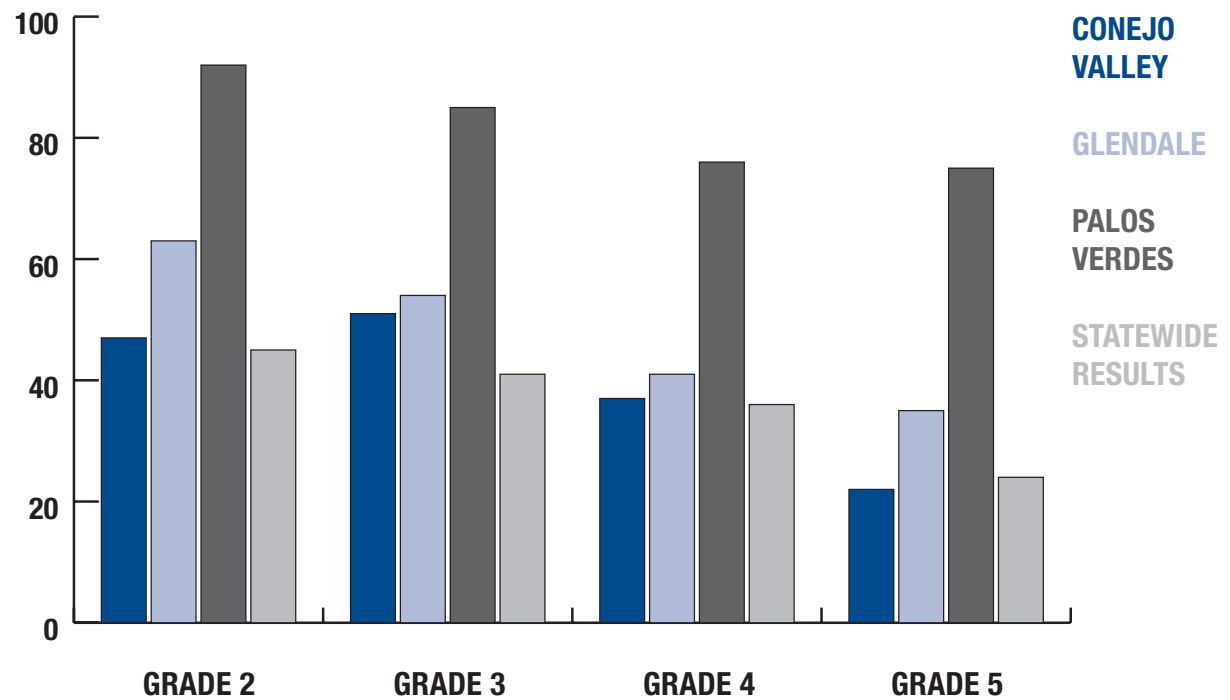
Everyday Mathematics

Against matched-comparison districts, a higher proportion of students in both Poway and Conejo Valley were at or above proficiency in mathematics.



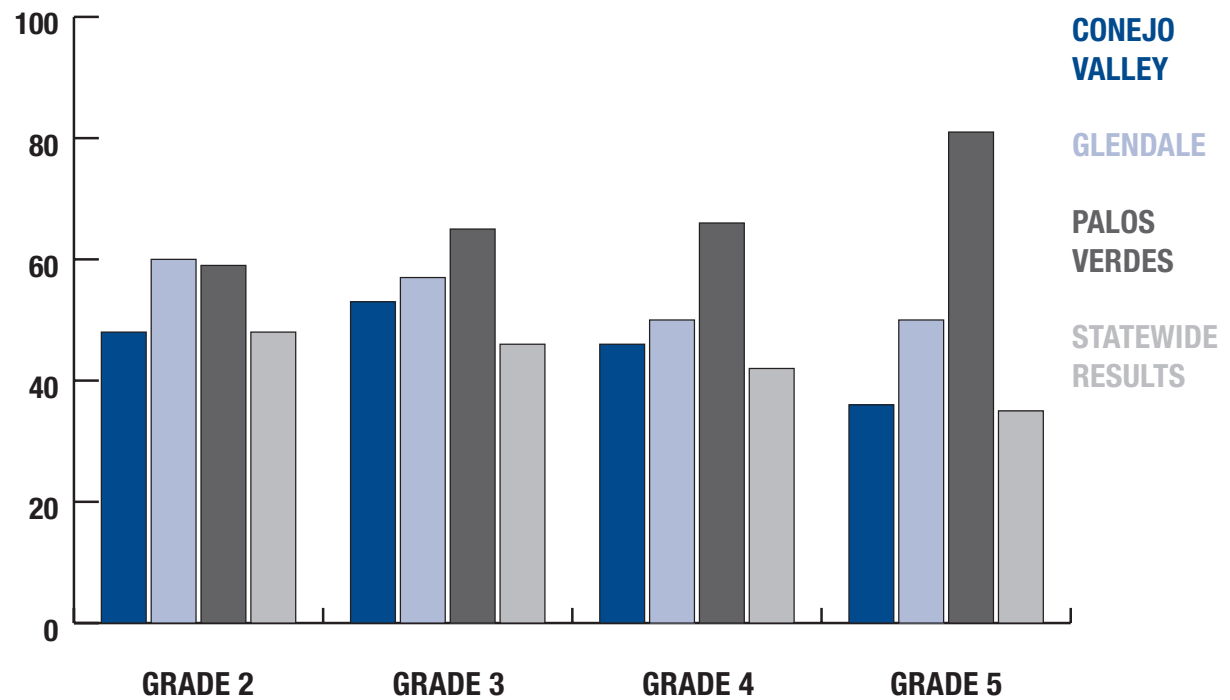
Everyday Mathematics

Everyday Mathematics Districts vs. State CST Mathematics 2006 – English Learners



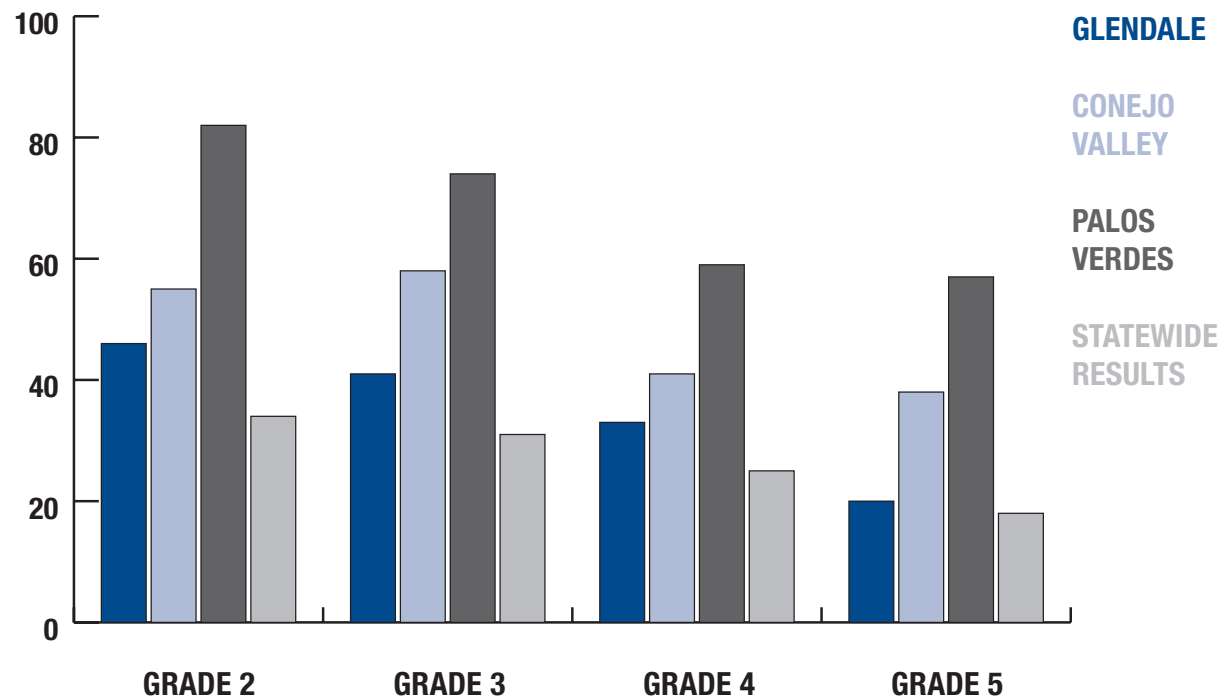
Everyday Mathematics

Everyday Mathematics Districts vs. State CST Mathematics 2006 – Economically Disadvantaged Students



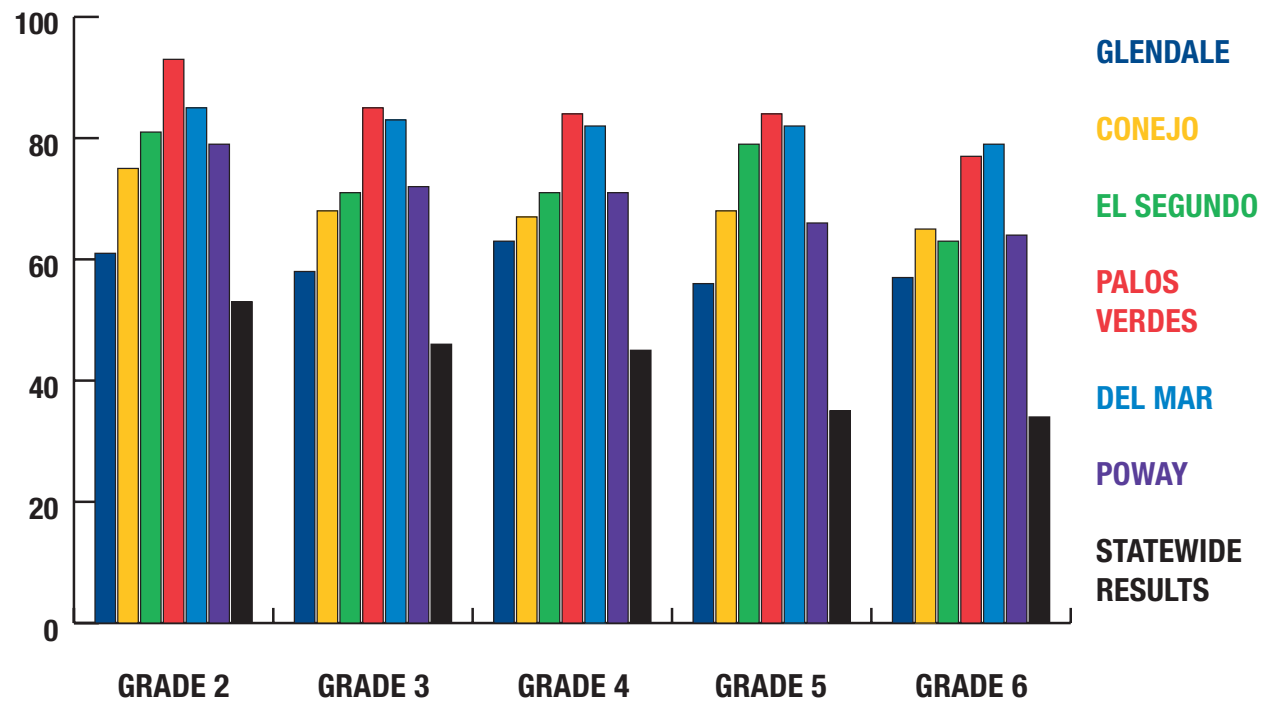
Everyday Mathematics

Everyday Mathematics Districts vs. State CST Mathematics 2006 – Students with Disabilities



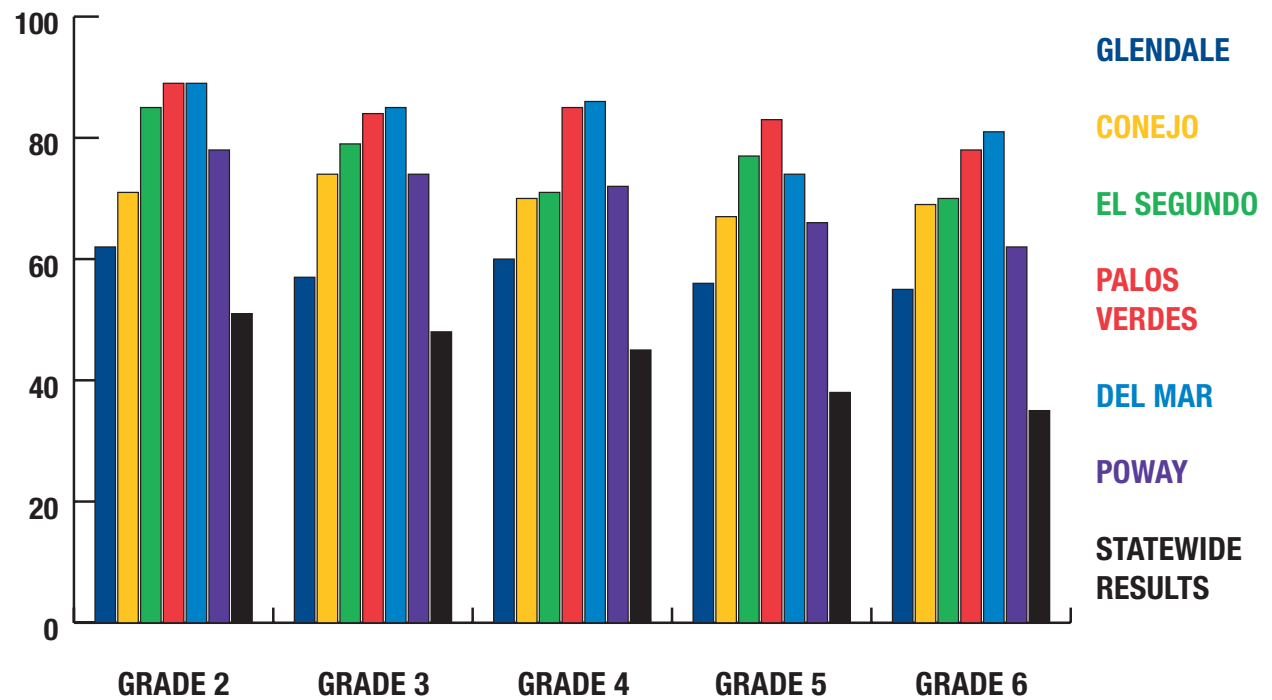
Everyday Mathematics

Everyday Mathematics Districts vs. State 2003 – CST Mathematics All Students



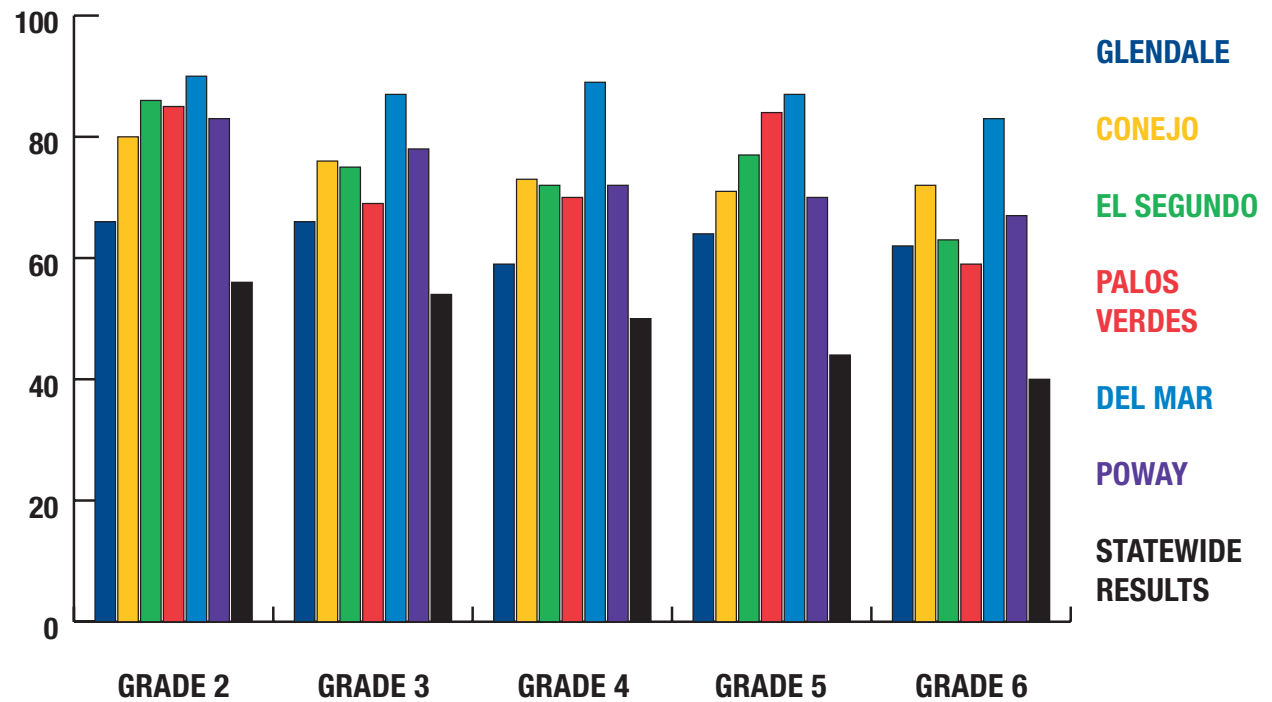
Everyday Mathematics

Everyday Mathematics Districts vs. State 2004 – CST Mathematics All Students



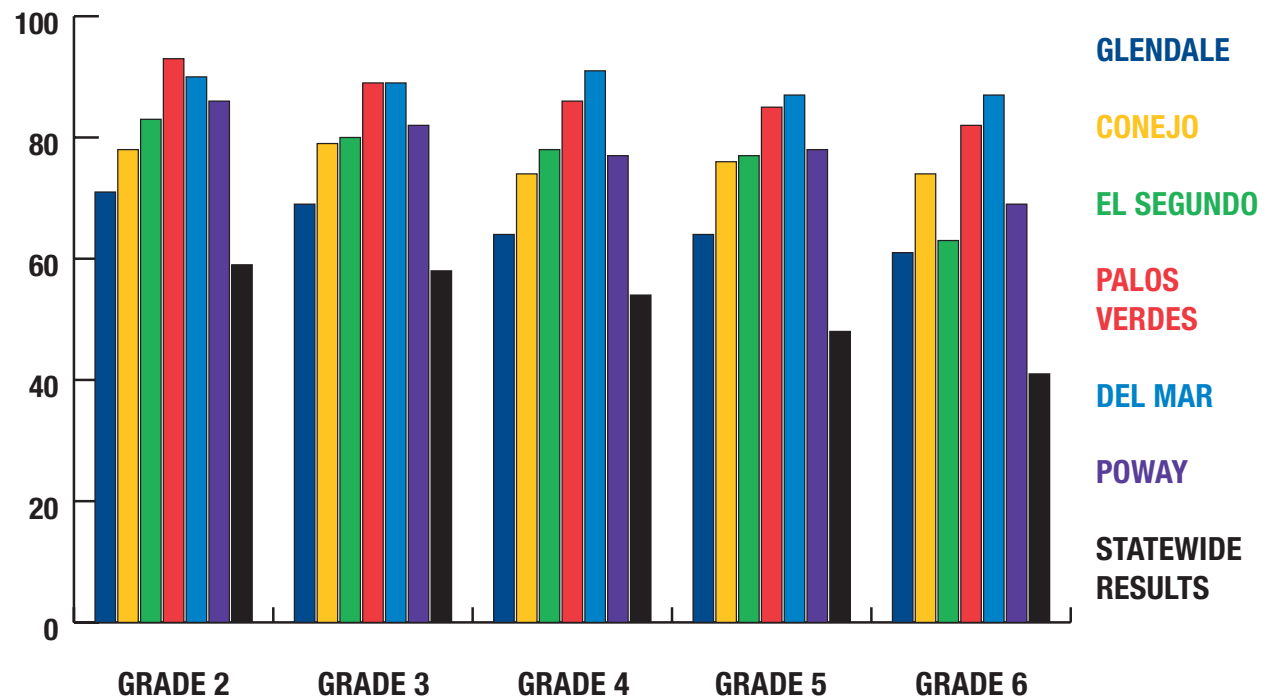
Everyday Mathematics

Everyday Mathematics Districts vs. State 2005 – CST Mathematics All Students



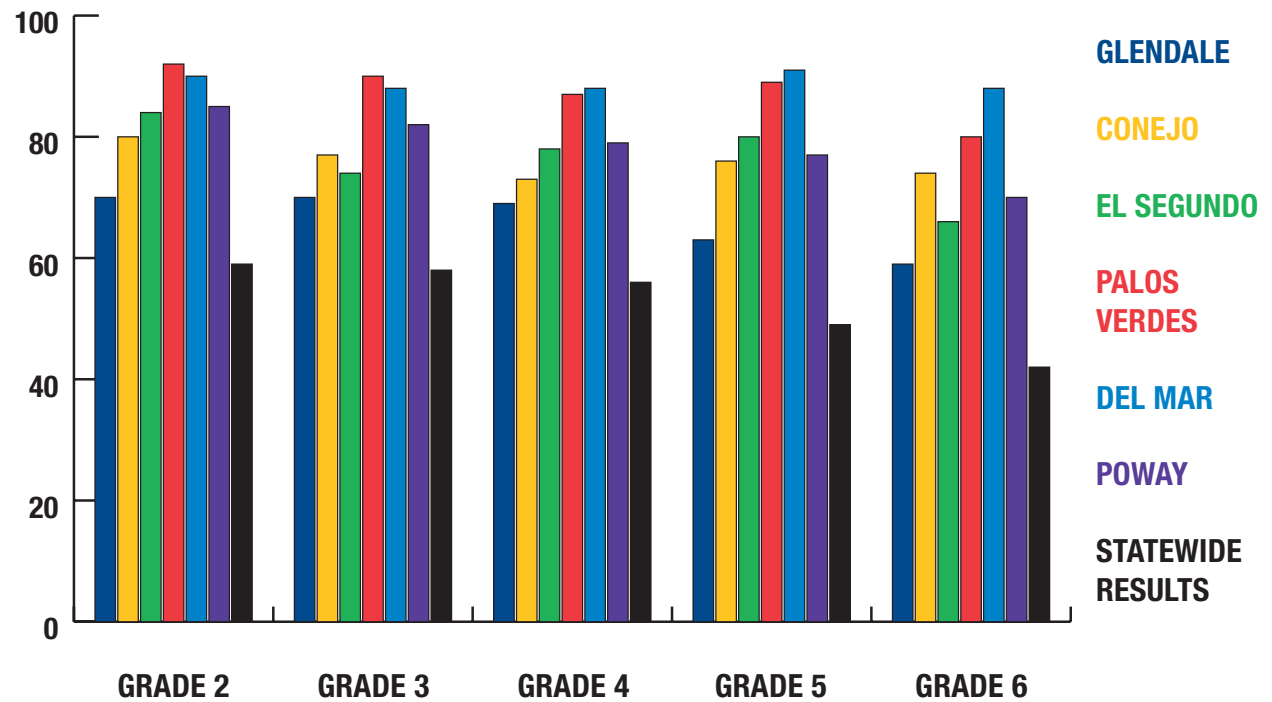
Everyday Mathematics

Everyday Mathematics Districts vs. State 2006 – CST Mathematics All Students



Everyday Mathematics

Everyday Mathematics Districts vs. State 2007 – CST Mathematics All Students



Everyday Mathematics

**For more information and complimentary
evaluation samples, please contact:**

Wright Group/McGraw-Hill
West Regional Office
19201 120th Avenue, Suite 100
Bothell, WA 98011

Phone 877.800.1605

Fax 425.806.3430

Visit us on the Web at www.WrightGroup.com.

