

Palo Alto Unified School District
Garland Boundary Analysis,
Focusing on Middle and High
School Boundary Implications

Shelley Lapkoff, Ph.D. and Jeanne Gobalet, Ph.D.
Lapkoff & Gobalet Demographic Research, Inc.
www.Demographers.com

March 31, 2009



Agenda

- **Garland and Elementary Schools**
 - **Need for Garland (forecast without Garland)**
 - **Two forecasts with Garland open**
 - **Assuming historical enrollment rates in alternative schools**
 - **Assuming lower enrollment rates in alternative schools by Garland residents**
- **Garland and Middle School Boundaries**
- **Garland and High School Boundaries**
- **What if all of Garland were assigned to Jordan?**

The Bottom Line

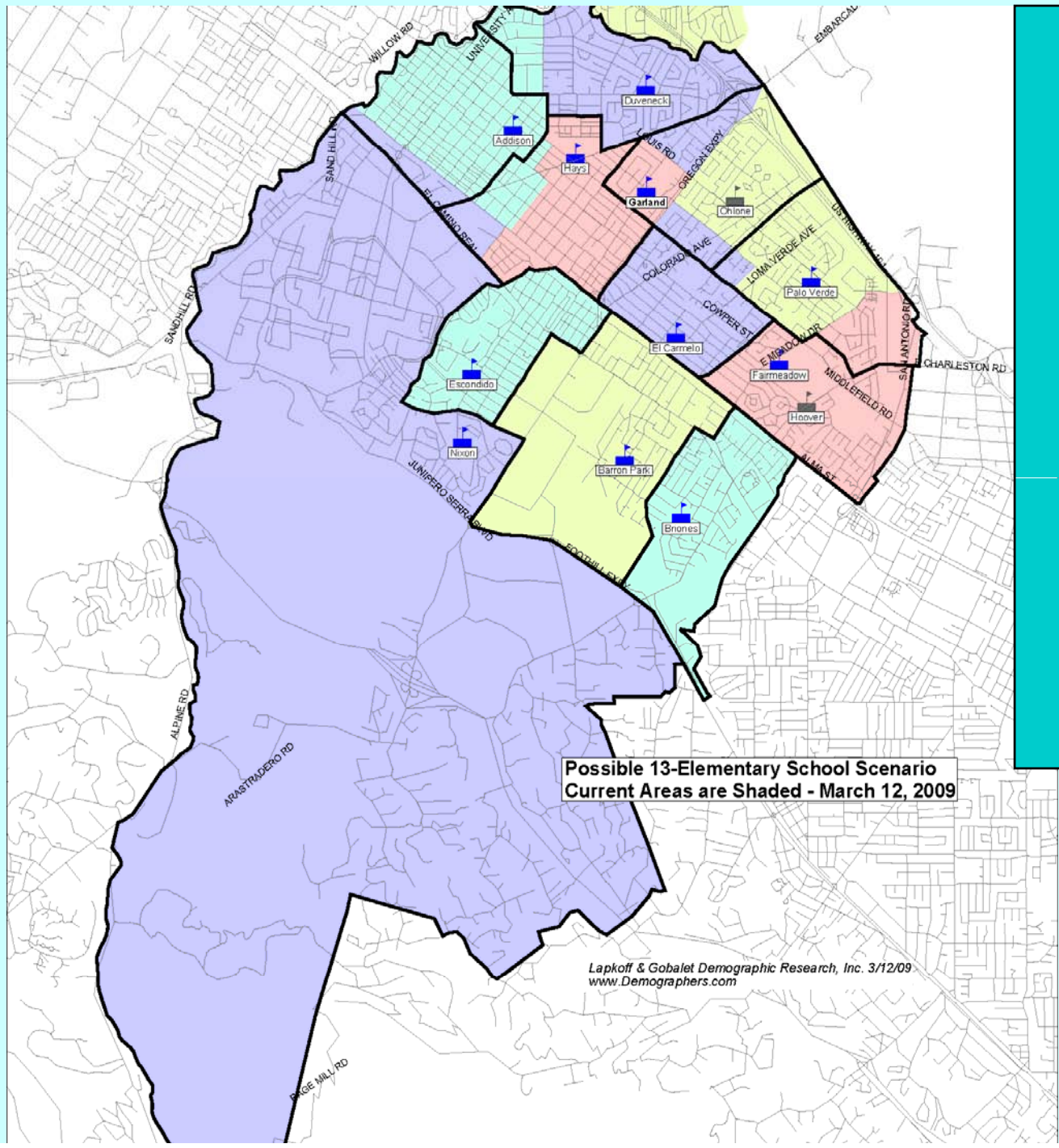
- **Garland serves students both north and south of Oregon Expressway in order to relieve enrollment pressures in both the North and South clusters.**
- **The current middle and high school boundaries provide balanced middle and high school enrollments.**
- **Assuming current middle and high school boundaries,**
 - **Garland is split for middle school, but intact for high school**
 - **El Carmelo and Palo Verde feed intact into middle school, but are split for high school**
- **If all of Garland were assigned to Jordan,**
 - **Middle schools would be substantially unbalanced**
 - **A small percentage of JLS students would be assigned to PAHS**

The Need for Garland: Comparison of forecasted enrollments & illustrative capacities **without Garland (excludes students from unidentified new housing):**

2013 Projected Enrollment Compared to Capacity								
	Resident Counts	Projected Number attending Special/Alt Programs	VTP Entering	Out of District Entering	Resident Students Entering	Net Enrollment Projected	Illustrative Capacity	Capacity - Projected Enrollment
Addison	607	102	26	3		534	436	-98
Duveneck	563	68	29	4		528	496	-32
Hays	499	80	34	1		454	518	64
Subtotal-North	1,669	249	89	8		1,516	1,450	-66
El Carmelo	497	112	22	9		416	372	-44
Fairmeadow	643	170	29	6		508	427	-81
Palo Verde	677	210	25	3		495	372	-123
Subtotal-South	1,817	491	76	18		1,419	1,171	-248
Barron Park	358	72	24	3		313	379	66
Briones	450	96	18	7		379	375	-4
Escondido	374	88	35	16	199	537	578	41
Nixon	477	54	27	3		453	442	-11
Subtotal-West	1,659	309	104	29	199	1,682	1,774	92
Hoover			31	0	328	359	372	13
Ohlone			35	18	487	540	540	1
Young 5s			3	1	36	40	40	0
Total Residents	5,144	1,050	337	74	1,050	5,556	5,347	-209

Enrollment Pressures without Garland

- **Palo Verde, Fairmeadow, and El Carmelo (combined) are short about 250-seats.**
- **Addison and Duvleneck (combined) are about 130 seats short, though Hays a surplus. The North has a net shortage of nearly 70 seats.**
- **These figures assume that some students will attend the alternative schools and programs.**
- **More space is needed in the South than in the North.**



Possible Elementary Attendance Boundaries

Possible 13-Elementary School Scenario
 Current Areas are Shaded - March 12, 2009

Lapkoff & Gobalet Demographic Research, Inc. 3/12/09
www.Demographers.com

Possible Elementary Boundaries

- **Garland's proposed boundaries would be (approximately) Embarcadero, Seale Avenue, Middlefield, and the Matadero Creek.**
- **North of Oregon Expressway, Garland takes part of Hays and Duveneck; in the south, Garland takes part of El Carmelo and Palo Verde attendance areas.**
- **About one-third of Garland's residents would live north of Embarcadero, while 2/3 would live in the South.**

Residents in Proposed Garland Attendance Area

	2003	2004	2005	2006	2007	2008
El Carmelo	55	62	64	64	68	61
Palo Verde	292	303	291	301	306	310
Total South	347	365	355	365	374	371
Duveneck	93	92	105	118	108	112
Hays	89	80	76	81	80	82
Total North	182	172	181	199	188	194
Total	529	537	536	564	562	565

2013 enrollment forecasts with Garland, assuming no intra-district transfers and historical enrollment rates in the alternative schools:

2013 Projected Enrollment Compared to Capacity, including Garland

Area	Resident Counts	Projected % Attending Sp/Alt Programs	Projected # Attending Sp/Alt Programs	VTP Entering	Out of District Entering	Resident Students Entering	Net Enrollment Projected	Expected Capacity	Capacity - Projected Enrollment
Addison	506	13%	64	24	3		468	436	-32
Barron Park	358	19%	68	22	3		316	379	63
Briones	450	26%	116	16	7		357	375	18
Duveneck	492	9%	45	27	4		477	496	19
El Carmelo	418	23%	96	20	9		351	372	21
Escondido	374	19%	71	33	16	199	551	578	27
Fairmeadow	525	30%	157	27	6		401	427	26
Garland	575	30%	175	25	0		425	480	55
Hays	497	15%	76	32	1		455	518	63
Nixon	477	12%	56	25	3		448	442	-6
Palo Verde	472	26%	125	23	3		374	372	-2
Hoover				29	0	328	357	372	15
Ohlone				32	18	487	537	540	3
Young 5s				3	1	36	40	40	0
Total	5,144		1,050	337	74	1,050	5,556	5,827	271

Will alternative school enrollments be affected by Garland opening?

- **Many Garland-area students currently attend Ohlone, and much smaller numbers attend Hoover and Escondido. Our comparison of capacity and school enrollments (implicitly) assumed that the rate of alternative school enrollments by geographical area will remain the same. However, the number of Garland area students attending Ohlone (and Hoover and Escondido) would probably decline after the school re-opens.**
- **This means that Garland is likely to have more enrollments than a forecast based on historical experience, because fewer students from the area will attend the alternative schools.**
- **If fewer Garland residents attend Ohlone, Hoover, and Spanish Immersion, this will free spaces throughout the District as more students from other attendance areas attend alternative programs.**

Ohlone Analysis

- **In the proposed Garland attendance area, a larger percentage of students from south of Oregon Expressway currently attend Ohlone than from the North (as expected, since Ohlone is located in the South).**

North Garland attending Ohlone

	2003	2004	2005	2006	2007	2008
Ohlone students	24	18	17	19	19	16
Total Garland-N residents	182	172	181	199	188	194
% of north	13%	10%	9%	10%	10%	8%

South Garland attending Ohlone

	2003	2004	2005	2006	2007	2008
Ohlone students	97	93	79	88	94	87
Total Garland-S residents	347	365	355	365	374	371
% of south	28%	25%	22%	24%	25%	23%

Ohlone Analysis, minor point

- **The northern part of the possible Garland attendance area is comprised of portions of current Duveneck and Hays attendance areas. More students from the Duveneck portion attend Ohlone than from the Hays portion, probably because of proximity.**

	2003	2004	2005	2006	2007	2008
Garland-N Duveneck	16	14	13	12	13	11
Garland-N Duveneck	93	92	105	118	108	112
% attending Ohlone from Garland-N Duveneck	17%	15%	12%	10%	12%	10%
Garland-N Hays attending	8	4	4	7	6	5
Garland-N Hays residents	89	80	76	81	80	82
% attending Ohlone from Garland-N Hays	9%	5%	5%	9%	8%	6%

Hoover and Escondido Analysis

Garland Residents Attending Hoover

	2003	2004	2005	2006	2007	2008
Garland North	8	10	8	7	2	1
Garland South	35	39	42	39	35	40
Total	43	49	50	46	37	41

Garland Residents Attending Escondido

	2003	2004	2005	2006	2007	2008
Garland North	4	4	9	5	4	5
Garland South	7	10	17	20	24	22
Total	11	14	26	25	28	27

2013 enrollment forecasts with Garland, assuming no intra-district transfers, and a much smaller number of alternative school students from Garland area:

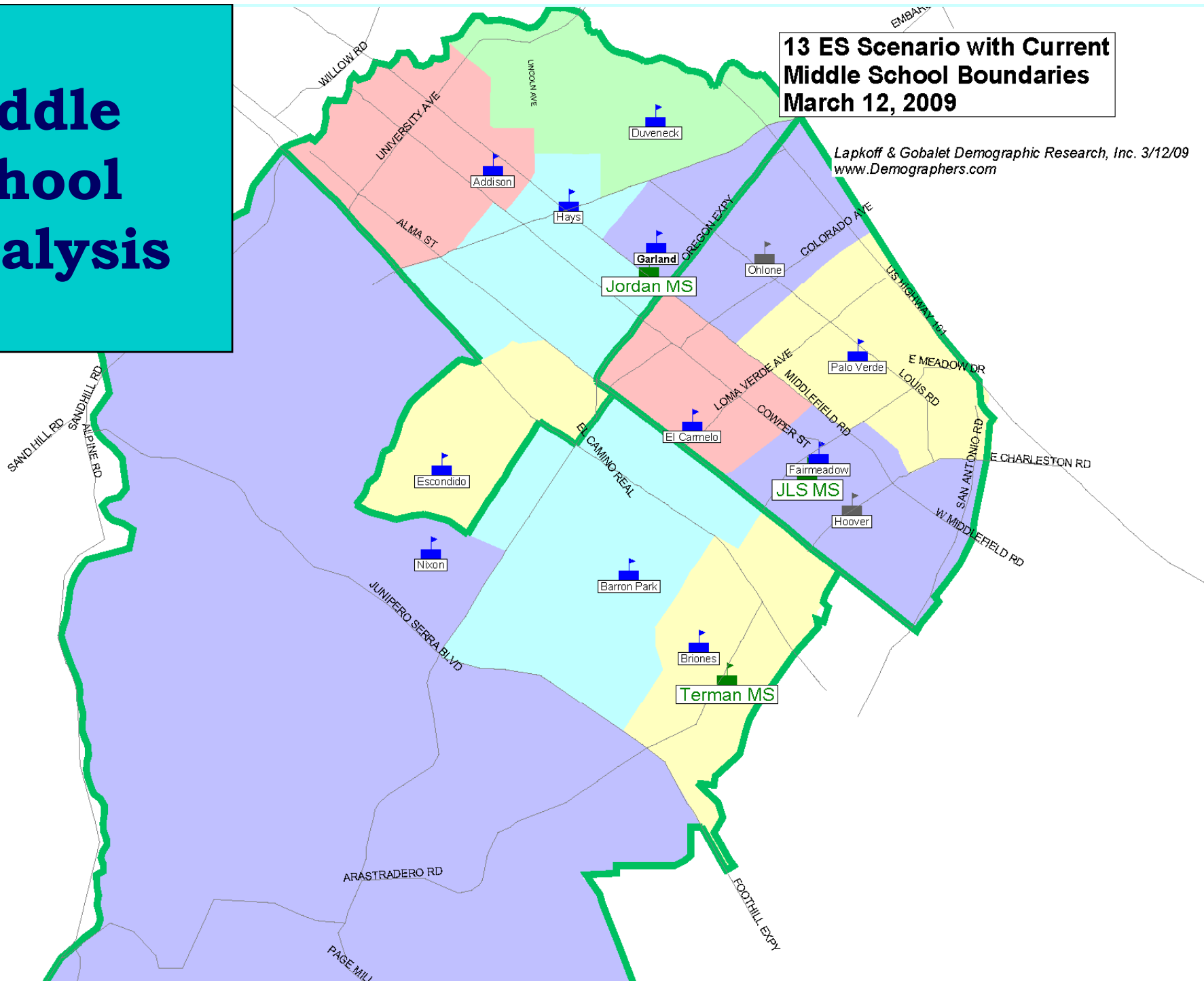
2013 Projected Enrollment Compared to Capacity, including Garland

Area	Resident Counts	Projected % Attending Sp/Alt Programs	Projected # Attending Sp/Alt Programs	VTP Entering	Out of District Entering	Resident Students Entering	Net Enrollment Projected	Expected Capacity	Capacity - Projected Enrollment
Addison	506	14%	73	24	3		460	436	-24
Barron Park	358	21%	74	22	3		310	379	69
Briones	450	28%	124	16	7		349	375	26
Duveneck	492	11%	54	27	4		469	496	27
El Carmelo	418	25%	103	20	9		344	372	28
Escondido	374	21%	78	33	16	199	545	578	33
Fairmeadow	525	32%	166	27	6		392	427	35
Garland	575	17%	98	25	0		502	480	-22
Hays	497	17%	84	32	1		446	518	72
Nixon	477	14%	64	25	3		440	442	2
Palo Verde	472	28%	133	23	3		366	372	6
Hoover				29	0	328	357	372	15
Ohlone				32	18	487	537	540	3
Young 5s				3	1	36	40	40	0
Total	5,144		1,050	337	74	1,050	5,556	5,827	271

Middle School Analysis

13 ES Scenario with Current Middle School Boundaries
March 12, 2009

Lapkoff & Gobalet Demographic Research, Inc. 3/12/09
www.Demographers.com



If middle school boundaries remain:

- **Garland is split at Oregon Expressway between JLS and Jordan:**
 - **About 100 Garland area middle school students are north of Oregon, assigned to Jordan**
 - **About 175 Garland area middle school students are south of Oregon, assigned to JLS**

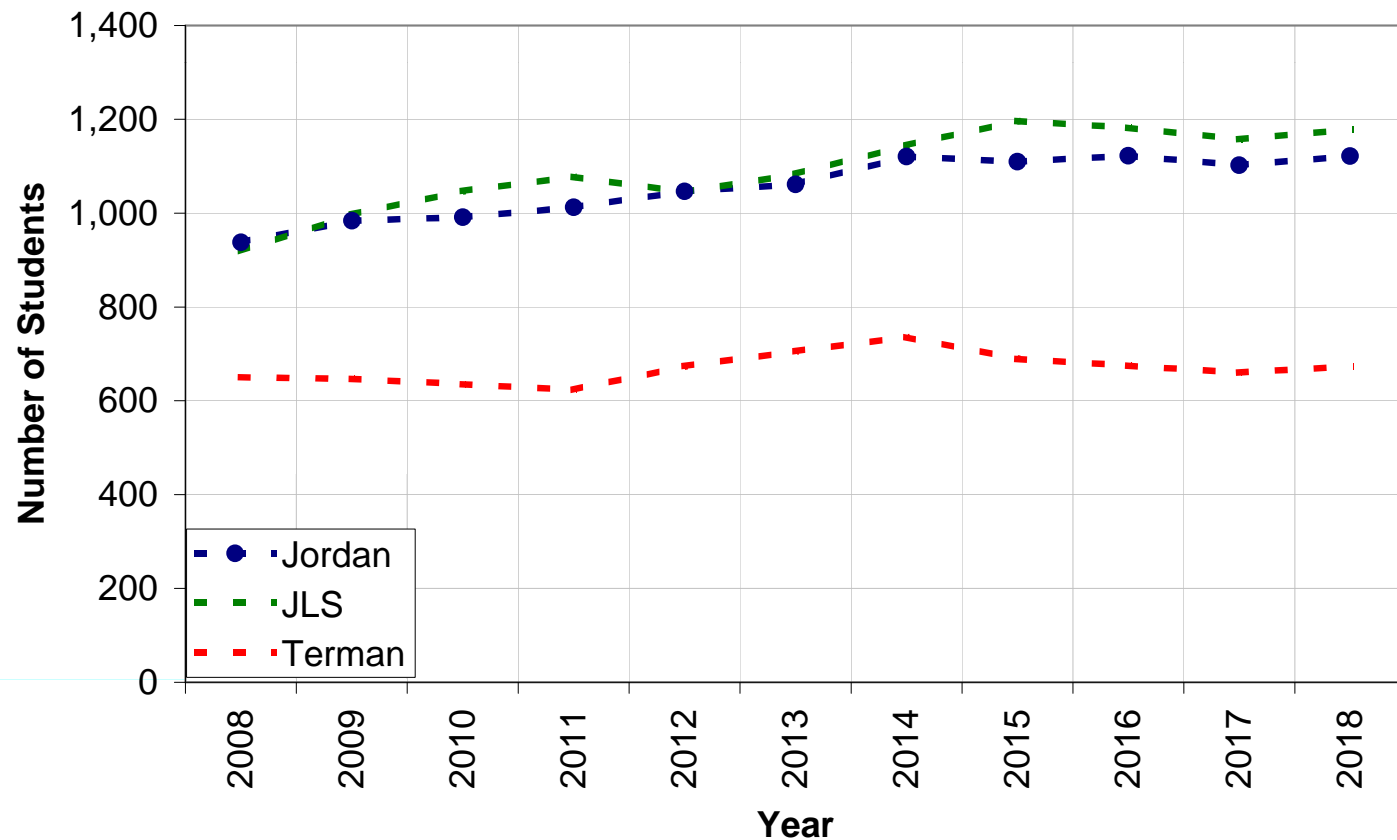
	Middle School Students Split					
	2003	2004	2005	2006	2007	2008
North Garland	84	91	98	117	121	108
South Garland	178	164	178	180	193	169
Total	262	255	276	297	314	277
% North	32%	36%	36%	39%	39%	39%

- **All other elementary schools stay intact (with a small exception in the Addison/Nixon area).**

Middle School Analysis

- **The middle schools are nicely balanced now, partly as a result of intra-district transfers.**

Middle School Enrollment Forecasts



Middle School Forecasts, by Component

Enrollment Forecast for Each Middle School

Jordan

	2008	2009	2010	2011	2012	2013	2014	2015	2016	2017	2018
Residents of attendance area	824	862	873	898	931	945	1,001	991	1,004	983	1,003
Ravenswood	68	75	72	69	69	70	74	73	72	73	73
Out-of-district	13	13	13	13	13	13	13	13	13	13	13
Net transfers	33	33	33	33	33	33	33	33	33	33	33
Resulting enrollments	938	984	991	1,013	1,046	1,061	1,121	1,110	1,122	1,102	1,122

JLS

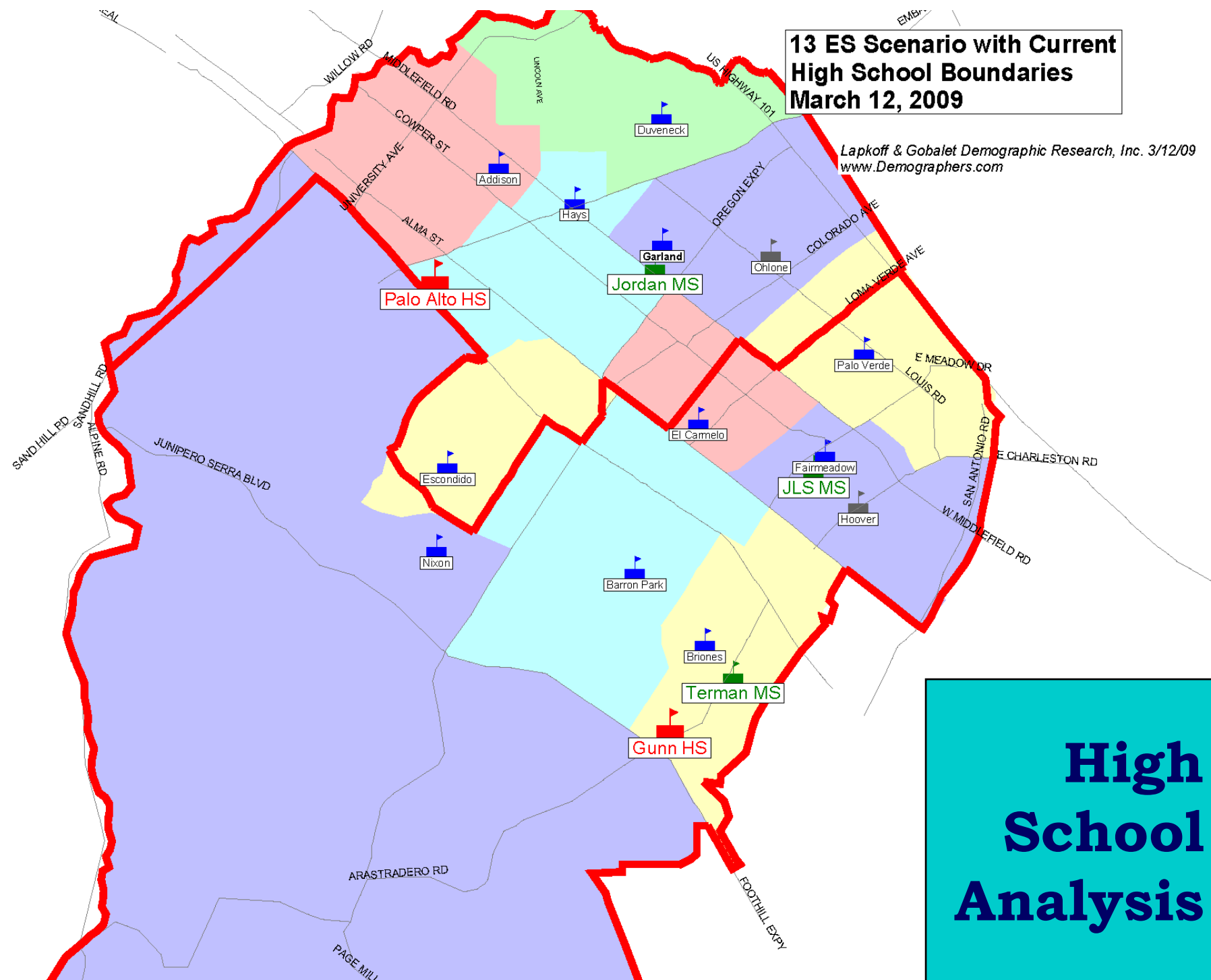
	2008	2009	2010	2011	2012	2013	2014	2015	2016	2017	2018
Residents of attendance area	816	889	941	974	941	979	1,037	1,090	1,076	1,050	1,072
Ravenswood	50	55	53	50	51	52	54	53	53	54	53
Out-of-district	12	12	12	12	12	12	12	12	12	12	12
Net transfers	41	41	41	41	41	41	41	41	41	41	41
Resulting enrollments	919	997	1,047	1,078	1,045	1,083	1,144	1,196	1,182	1,157	1,178

Terman

	2008	2009	2010	2011	2012	2013	2014	2015	2016	2017	2018
Residents of attendance area	713	708	697	686	737	768	798	751	737	722	735
Ravenswood	13	14	14	13	13	13	14	14	14	14	14
Out-of-district	10	10	10	10	10	10	10	10	10	10	10
Net transfers	-86	-86	-86	-86	-86	-86	-86	-86	-86	-86	-86
Resulting enrollments	650	647	635	623	674	706	736	689	675	660	673

13 ES Scenario with Current High School Boundaries
March 12, 2009

Lapkoff & Gobalet Demographic Research, Inc. 3/12/09
www.Demographers.com



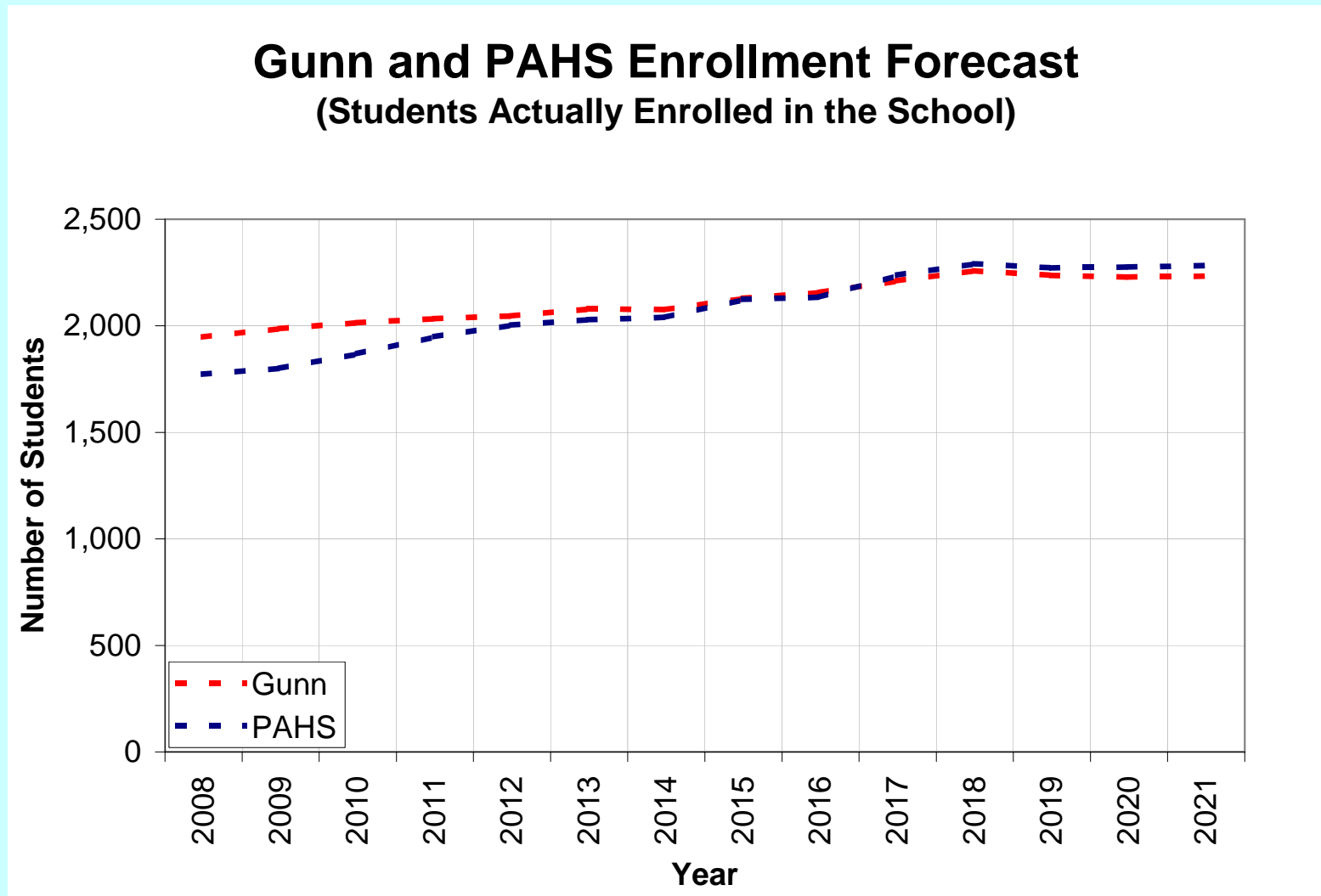
High School Analysis

If current high school boundaries remain:

- **All Garland area residents are assigned to PAHS.**
- **El Carmelo and Palo Verde areas remain split, as under the current system.**
- **JLS remains split between PAHS and Gunn.**

High School Analysis

- The high schools are nicely balanced now



High School Forecasts, by Component

Enrollment Forecast for Each High School

	Gunn													
	2008	2009	2010	2011	2012	2013	2014	2015	2016	2017	2018	2019	2020	2021
Residents of attendance area	1,856	1,897	1,921	1,937	1,947	1,980	1,977	2,029	2,057	2,111	2,158	2,136	2,128	2,133
Ravenswood	23	22	24	28	30	31	30	31	30	31	32	31	32	31
Out-of-district	41	41	41	41	41	41	41	41	41	41	41	41	41	41
Net transfers	28	28	28	28	28	28	28	28	28	28	28	28	28	28
Resulting enrollments	1,948	1,987	2,015	2,033	2,046	2,080	2,076	2,128	2,156	2,212	2,259	2,236	2,229	2,233

	PAHS													
	2008	2009	2010	2011	2012	2013	2014	2015	2016	2017	2018	2019	2020	2021
Residents of attendance area	1,661	1,693	1,753	1,821	1,866	1,887	1,901	1,984	1,997	2,095	2,147	2,131	2,132	2,139
Ravenswood	89	84	93	105	115	118	117	117	114	120	121	118	121	121
Out-of-district	18	18	18	18	18	18	18	18	18	18	18	18	18	18
Net transfers	5	5	5	5	5	5	5	5	5	5	5	5	5	5
Resulting enrollments	1,773	1,801	1,869	1,949	2,004	2,028	2,040	2,124	2,134	2,237	2,291	2,272	2,276	2,282

High School Splits Under New Boundaries

- **About 100 Palo Verde area high school residents assigned to PAHS, with about 200-250 assigned to Gunn**
- **About 100 El Carmelo area high school residents assigned to PAHS, and almost 200 to Gunn**

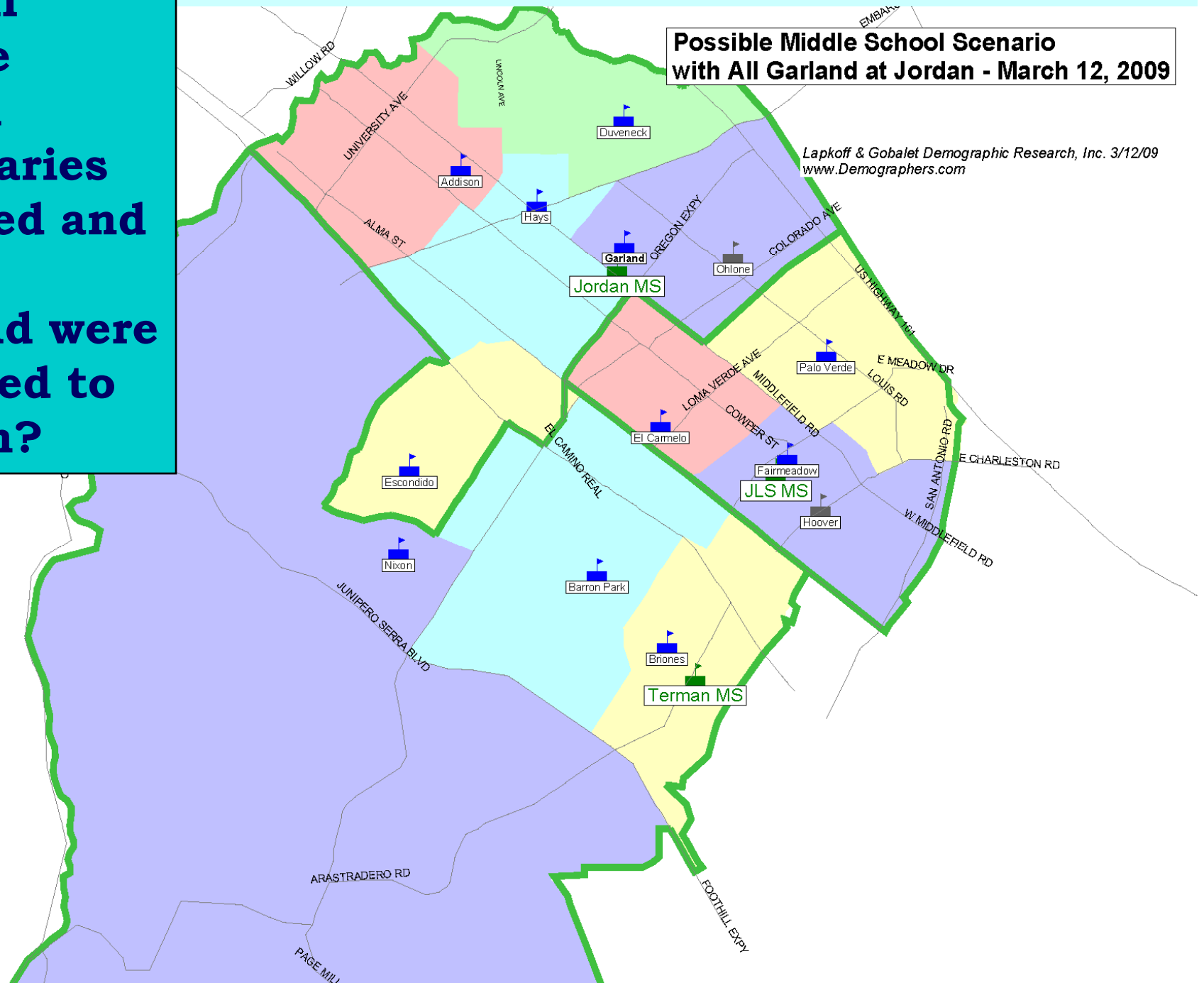
High School Splits under the New Elementary Boundaries						
	2003	2004	2005	2006	2007	2008
Palo Verde to PAHS	109	107	85	92	93	97
Palo Verde to Gunn	167	177	183	193	215	237
Total PV residents	276	284	268	285	308	334
% PV residents to PAHS	39%	38%	32%	32%	30%	29%
El Carmelo to PAHS	129	138	136	133	120	107
El Carmelo to Gunn	160	148	156	165	177	190
Total EC residents	289	286	292	298	297	297
% EC residents to PAHS	45%	48%	47%	45%	40%	36%
PV and EC to PAHS	238	245	221	225	213	204
PV and EC to Gunn	327	325	339	358	392	427
Total PV and EC residents	565	570	560	583	605	631
% PV and EC residents to PAHS	42%	43%	39%	39%	35%	32%

High school splits with current boundaries are:

- **Currently, about 275 Palo Verde area high school residents assigned to PAHS, with about 150 assigned to Gunn**
- **Currently, almost 200 El Carmelo area high school residents assigned to PAHS, and nearly 200 to Gunn**

High School Splits under the Current Elementary Boundaries						
	2003	2004	2005	2006	2007	2008
Palo Verde to PAHS	300	286	272	267	270	275
Palo Verde to Gunn	125	131	133	140	147	153
Total PV residents	425	417	405	407	417	428
% PV residents to PAHS	71%	69%	67%	66%	65%	64%
El Carmelo to PAHS	202	201	200	198	183	178
El Carmelo to Gunn	160	148	156	165	177	190
Total EC residents	362	349	356	363	360	368
% EC residents to PAHS	56%	58%	56%	55%	51%	48%
PV and EC to PAHS	502	487	472	465	453	453
PV and EC to Gunn	285	279	289	305	324	343
Total PV and EC residents	787	766	761	770	777	796
% PV and EC residents to PAHS	64%	64%	62%	60%	58%	57%

What if middle school boundaries changed and all of Garland were assigned to Jordan?



What if middle school boundaries changed and all of Garland were assigned to Jordan?

- **Jordan gains about 175 students; JLS loses about 175 students. Result is a 350-student difference between the two schools. Changes in numbers of intra-district transfers could reduce this somewhat; perhaps programs could be moved from Jordan to JLS.**
- **A small percentage of JLS students would be assigned to PAHS.**

JLS split if all of Garland were assigned to Jordan:

- In fall 2008, 36 percent of JLS residents were assigned to PAHS. If all Garland area residents were assigned to Jordan, then only 20 percent of JLS residents would be assigned to PAHS. (Actual enrollments would be affected by intra-district transfers.)

	If All of Garland Assigned to Jordan					
	2003	2004	2005	2006	2007	2008
JLS Residents to Gunn	673	699	722	720	767	796
JLS Residents to PAHS	238	245	221	225	213	204
Total JLS Residents	911	944	943	945	980	1000
% JLS Residents to PAHS	26%	26%	23%	24%	22%	20%
	Under Current Boundaries					
	2003	2004	2005	2006	2007	2008
JLS Residents to Gunn	673	699	722	720	767	796
JLS Residents to PAHS	502	487	472	465	453	453
Total JLS Residents	1175	1186	1194	1185	1220	1249
% JLS Residents to PAHS	43%	41%	40%	39%	37%	36%

The Bottom Line (again)

- **Garland serves students both north and south of Oregon Expressway in order to relieve enrollment pressures in both the North and South clusters.**
- **The current middle and high school boundaries provide balanced middle and high school enrollments.**
- **Assuming current middle and high school boundaries,**
 - **Garland is split for middle school, but intact for high school**
 - **El Carmelo and Palo Verde feed intact into middle school, but are split for high school**
- **If all of Garland were assigned to Jordan,**
 - **Middle schools would be substantially unbalanced**
 - **A small percentage of JLS students would be assigned to PAHS**

Appendix Table

Basic Data

Grade	Garland-North						Garland-South						Garland-Total					
	2003	2004	2005	2006	2007	2008	2003	2004	2005	2006	2007	2008	2003	2004	2005	2006	2007	2008
K	24	26	34	36	29	23	59	58	46	61	67	55	83	84	80	97	96	78
1	23	26	24	36	38	33	51	65	54	51	56	69	74	91	78	87	94	102
2	30	21	30	28	35	36	61	58	71	55	60	55	91	79	101	83	95	91
3	35	31	21	36	25	35	49	65	56	73	57	63	84	96	77	109	82	98
4	32	35	36	23	36	27	66	50	70	61	73	58	98	85	106	84	109	85
5	38	33	36	40	25	40	61	69	58	64	61	71	99	102	94	104	86	111
6	28	36	33	45	38	26	53	49	67	56	66	58	81	85	100	101	104	84
7	28	28	37	37	40	39	60	53	54	67	55	65	88	81	91	104	95	104
8	28	27	28	35	43	43	65	62	57	57	72	46	93	89	85	92	115	89
9	25	25	29	33	40	41	75	60	70	52	63	76	100	85	99	85	103	117
10	27	29	25	31	32	42	65	67	61	58	57	57	92	96	86	89	89	99
11	24	28	29	22	31	28	67	59	64	65	58	55	91	87	93	87	89	83
12	29	22	29	28	21	29	57	56	56	65	62	61	86	78	85	93	83	90
Total	372	367	391	430	433	442	789	771	786	787	812	794	1160	1138	1175	1215	1240	1231
K to 5	182	172	181	199	188	194	347	365	355	365	374	371	529	537	536	564	562	565
6 to 8	84	91	98	117	121	108	178	164	178	180	193	169	262	255	276	297	314	277
9 to 12	105	104	112	114	124	140	264	242	251	240	240	249	369	346	363	354	364	389

*Proposed Garland boundaries use the Embarcadero, Seale Avenue, Middlefield Rd, and the Matadero Creek.

Percentage of Garland residents living in the north

	2003	2004	2005	2006	2007	2008
K to 5	34%	32%	34%	35%	33%	34%
6 to 8	32%	36%	36%	39%	39%	39%
9 to 12	28%	30%	31%	32%	34%	36%