



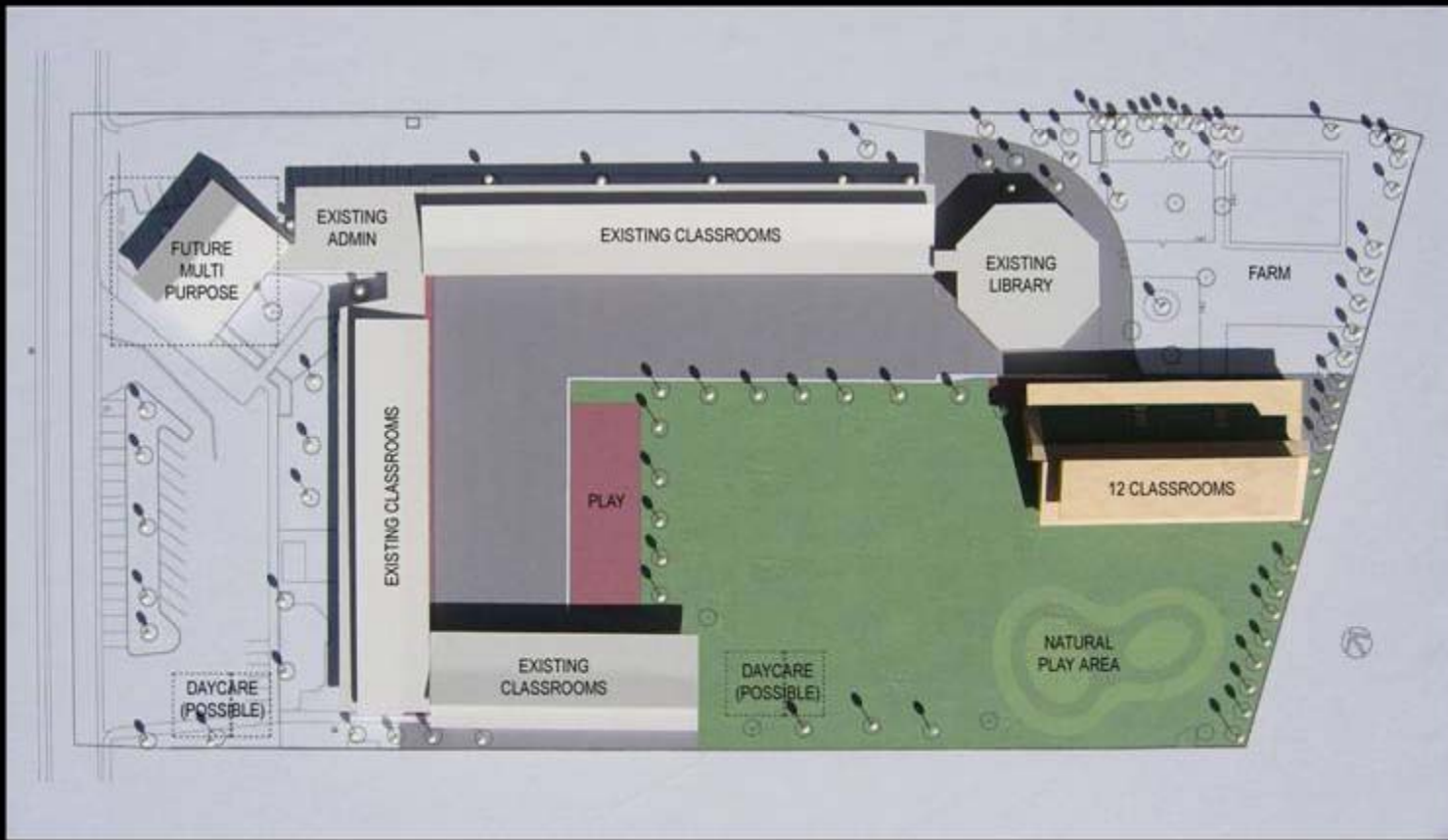
Site Committee  
Conceptual Recommendations



Priorities for Ohlone:

- integrate new building in existing campus
- reinforce Ohlone strengths
  - teacher interaction
  - togetherness
  - individual attention
  - farm
- organize construction to limit disruption
- preserve or increase existing playspace





OHLONE Recommended Concept - Two Story Scheme A





## SCHEME 2A

2 -Story Option

Site Capacity	Ohlone current	Ohlone proposed	PAUSD average
Children/acre site	66	78	69
Children/acre turf + hard court	183	193	140
Farm area (acres)	.65	.65	0

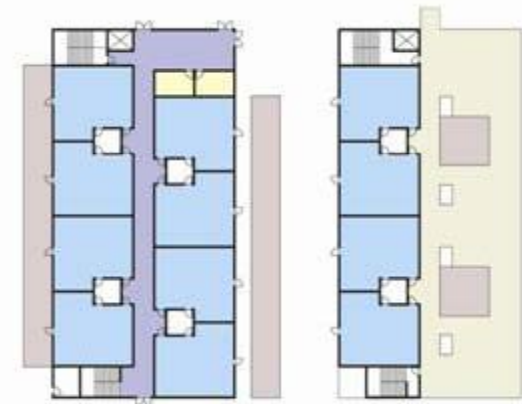




Reduced footprint  
Proximity to farm and library  
Portables stay

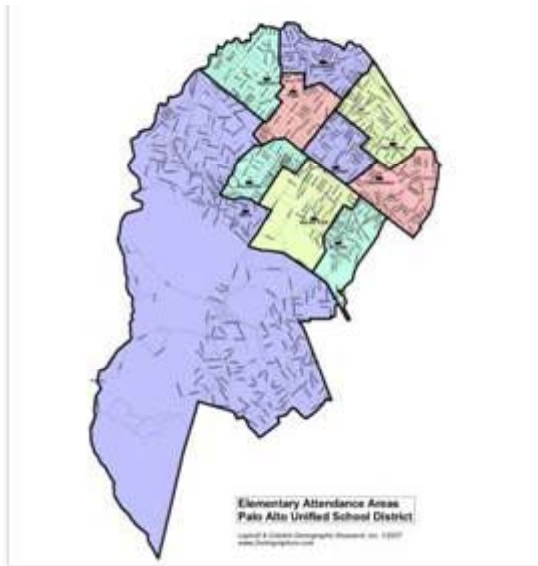


Higher \$\$\$/square foot  
Cuts off corner permanently



OHLONE Two story benefits/drawbacks





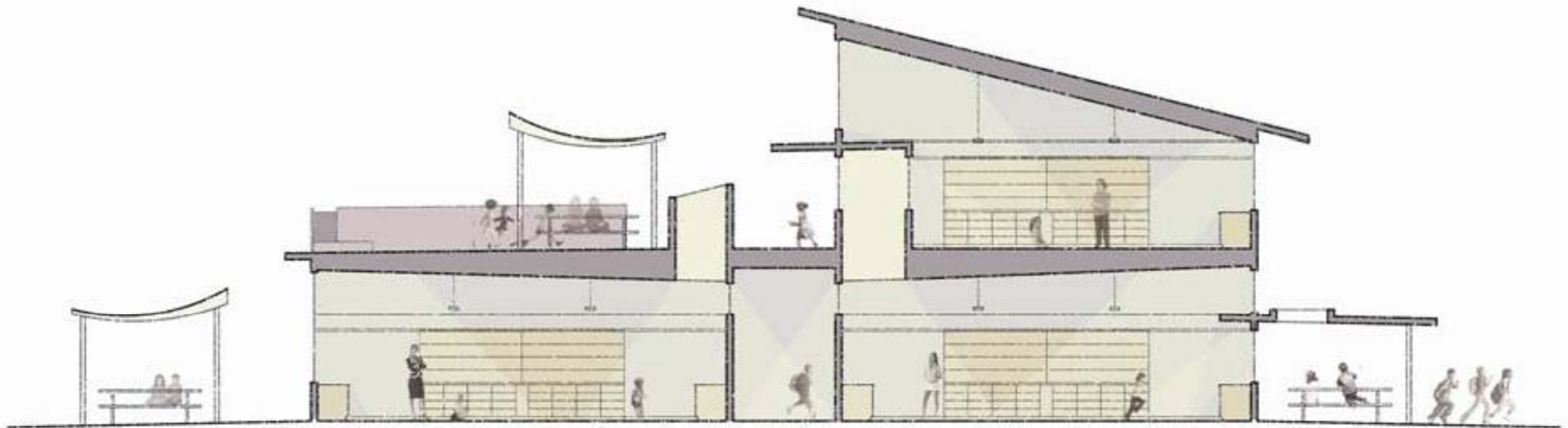
### Site Capacity

Ohlone current    Ohlone proposed    PAUSD average

Children/acre site	66	78	69
Children/acre turf + hard court	183	193	140
Farm area (acres)	.65	.65	0

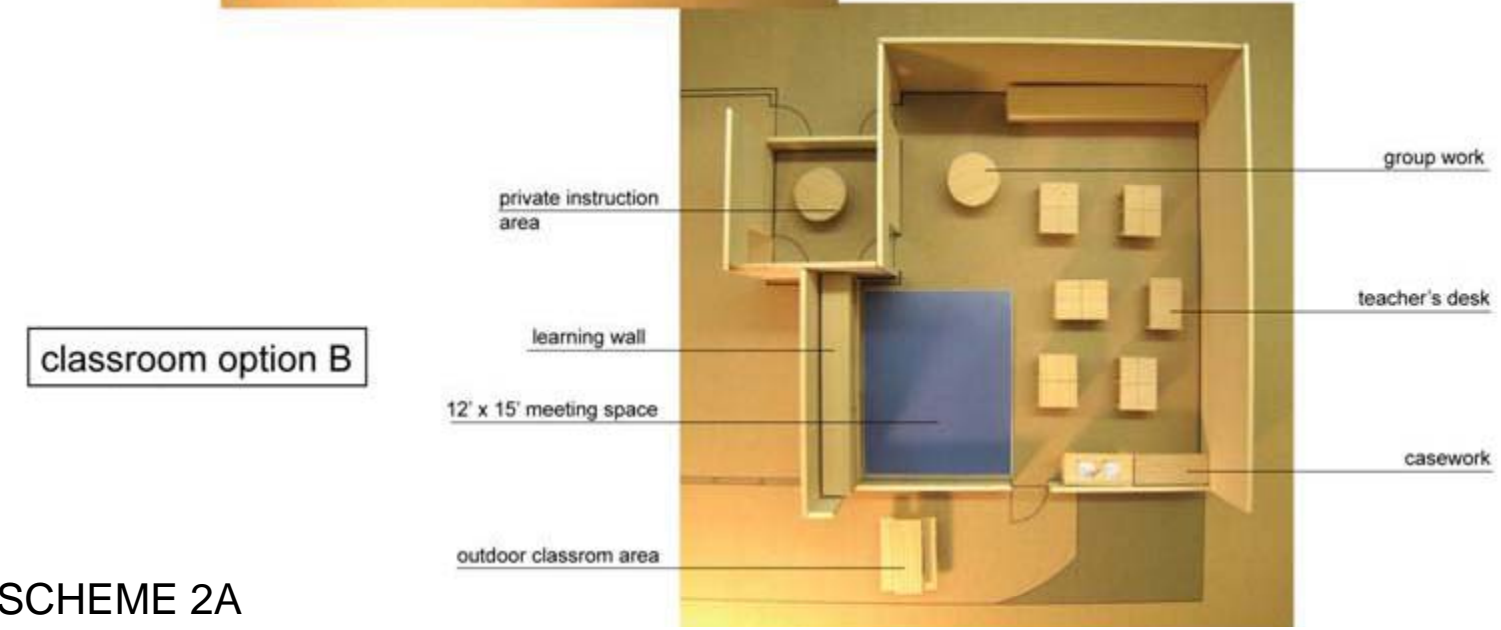
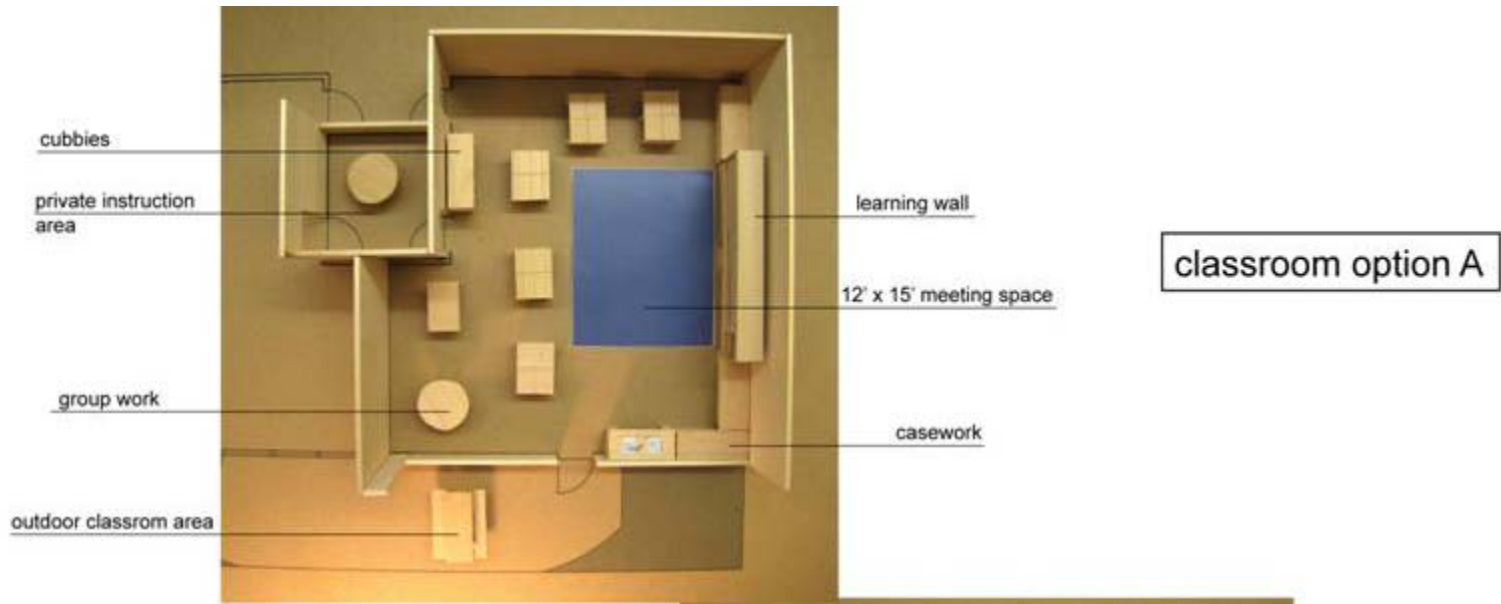
	Site (acres)	Building (square feet)	Parking (acres)	Hard court (acres)	Turf (acres)	Relocatable classrooms	Relocatable daycare	Enrollment	Children/acre		
									site	turf	hard
Addison	4.6	41,939	0.2	1.1	1.6	6	2	443	96	277	403
Barron Park	7	36,400	0.8	1	2.3	2	2	345	49	150	345
Duveneck	6.5	57,513	0.6	1.1	1.8	5	2	493	76	274	448
El Carmelo	4	39,280	0.1	0.8	1.7	1	2	371	93	218	464
Escondido	7.9	46,825	0.5	2.5	2.4	6	1	542	69	226	217 Spanish immersion
Fairmeadow	5.5	41,237	0.4	1.3	2	2	2	425	77	213	327 Jackson Hearing Center
Hoover	5.6	32,200	1.5	0.9	1.6	5	2	372	66	233	413
Briones	6.9	58,165	2.1	1.1	1.3	1	2	344	50	265	313 Briones Orthopedic Center
Nixon	10.3	59,403	1.8	2.3	4	2	2	434	42	109	189
Ohlone	7.2	43,029	0.8	1.1	1.5	5	2	475	66	317	432 Mandarin immersion
Palo Verde	5	35,443	1.3	0.7	1.8	4	2	373	75	207	533
Hays	7.2	49,371	0.4	1.7	2.7	6	2	506	70	187	298
Greendell	5	22,201	0	1.6	1	11					JCC preschool, adult ed
Garland	5.1	22,105	0.4	1.1	1.5	7					





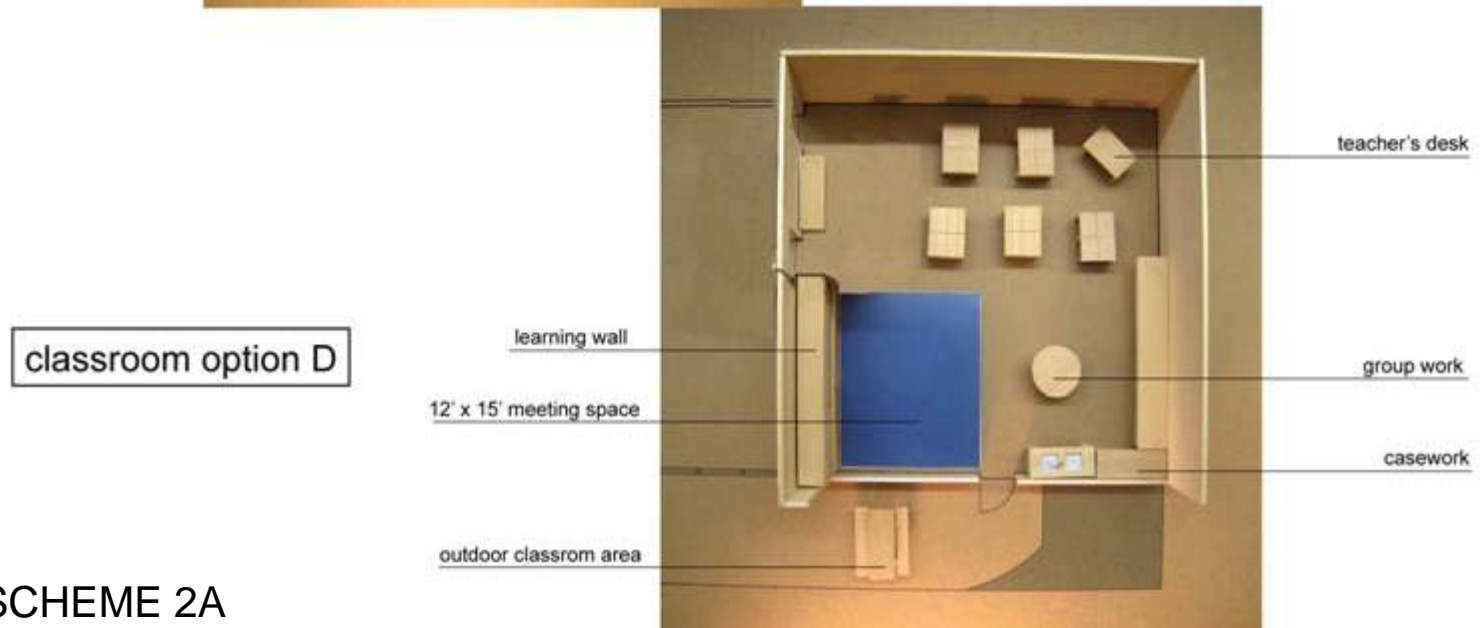
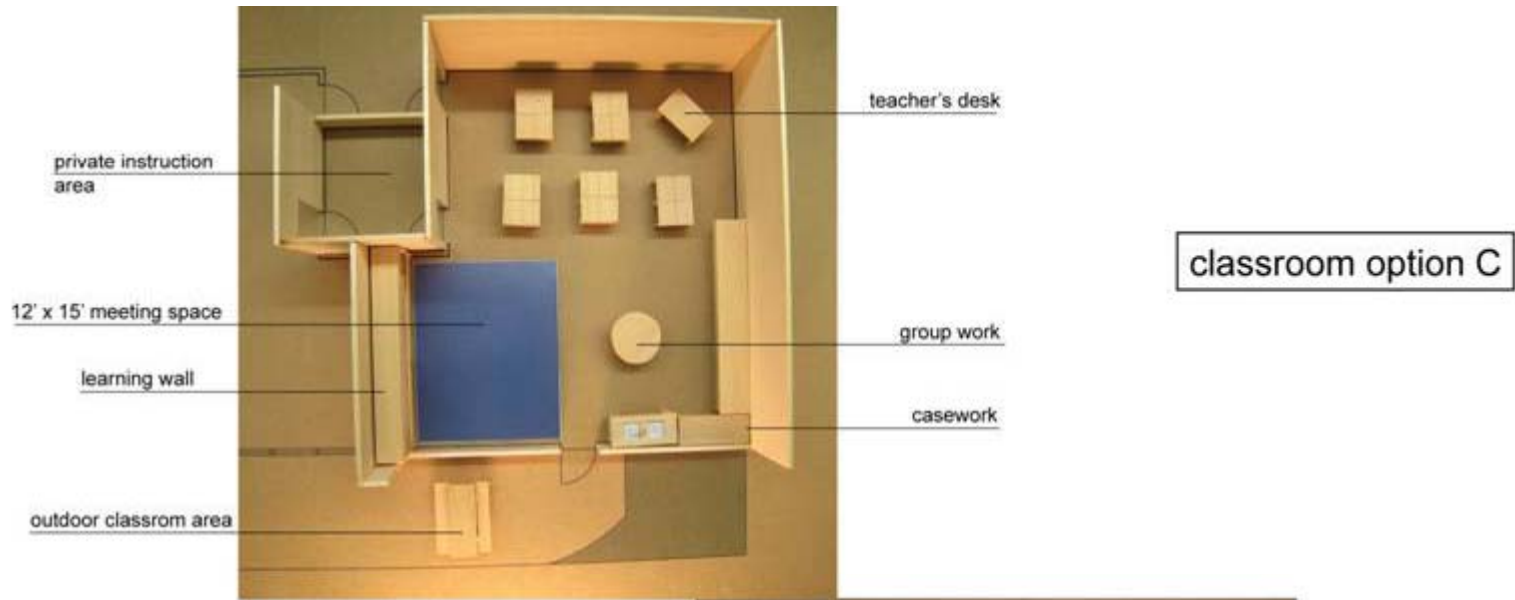
## SCHEME 2A - Section

Daylighting Concept



SCHEME 2A  
Classroom Layouts





SCHEME 2A  
Classroom Layouts

