



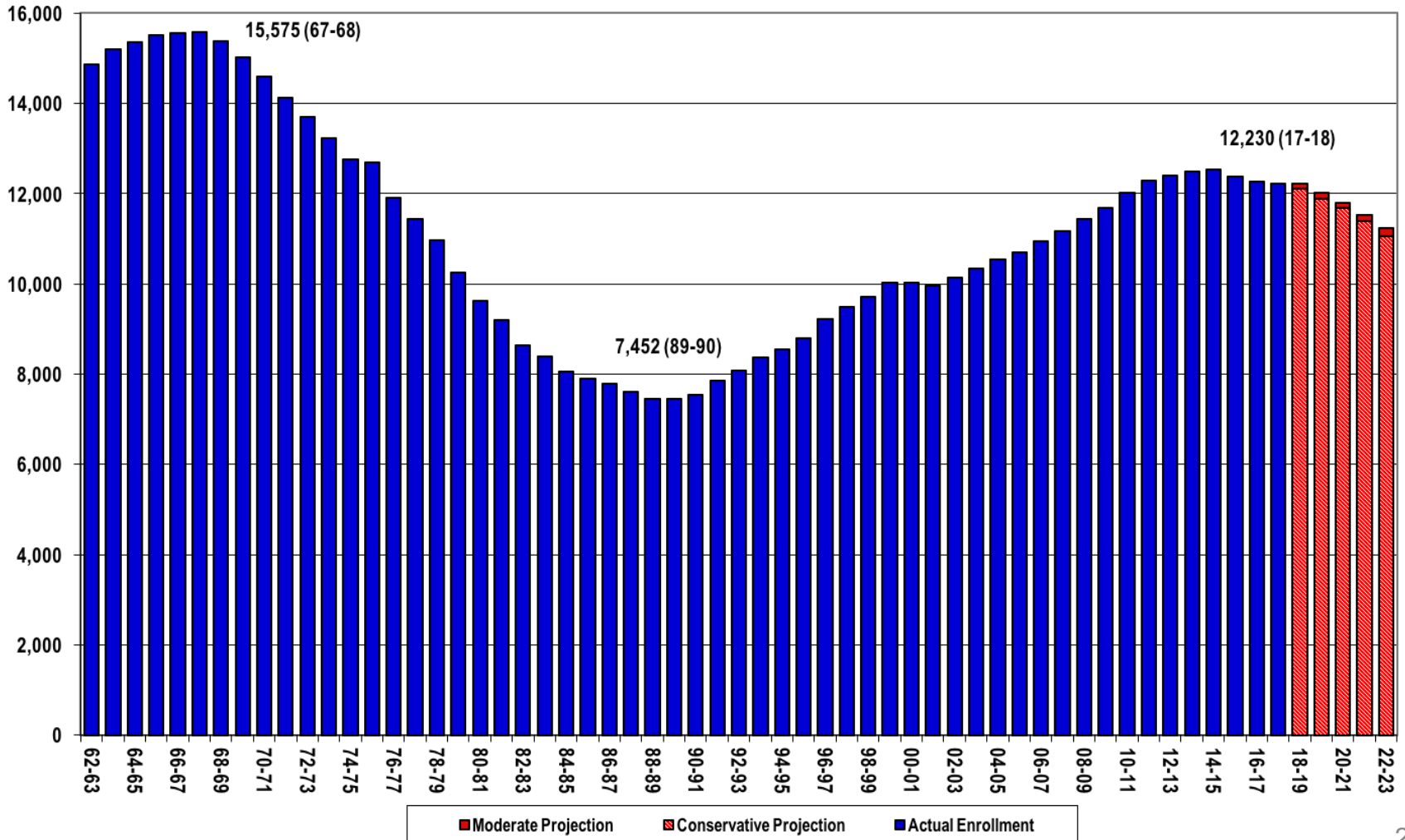
Enrollment and Class Size Summary

Palo Alto Unified School District
September 12, 2017

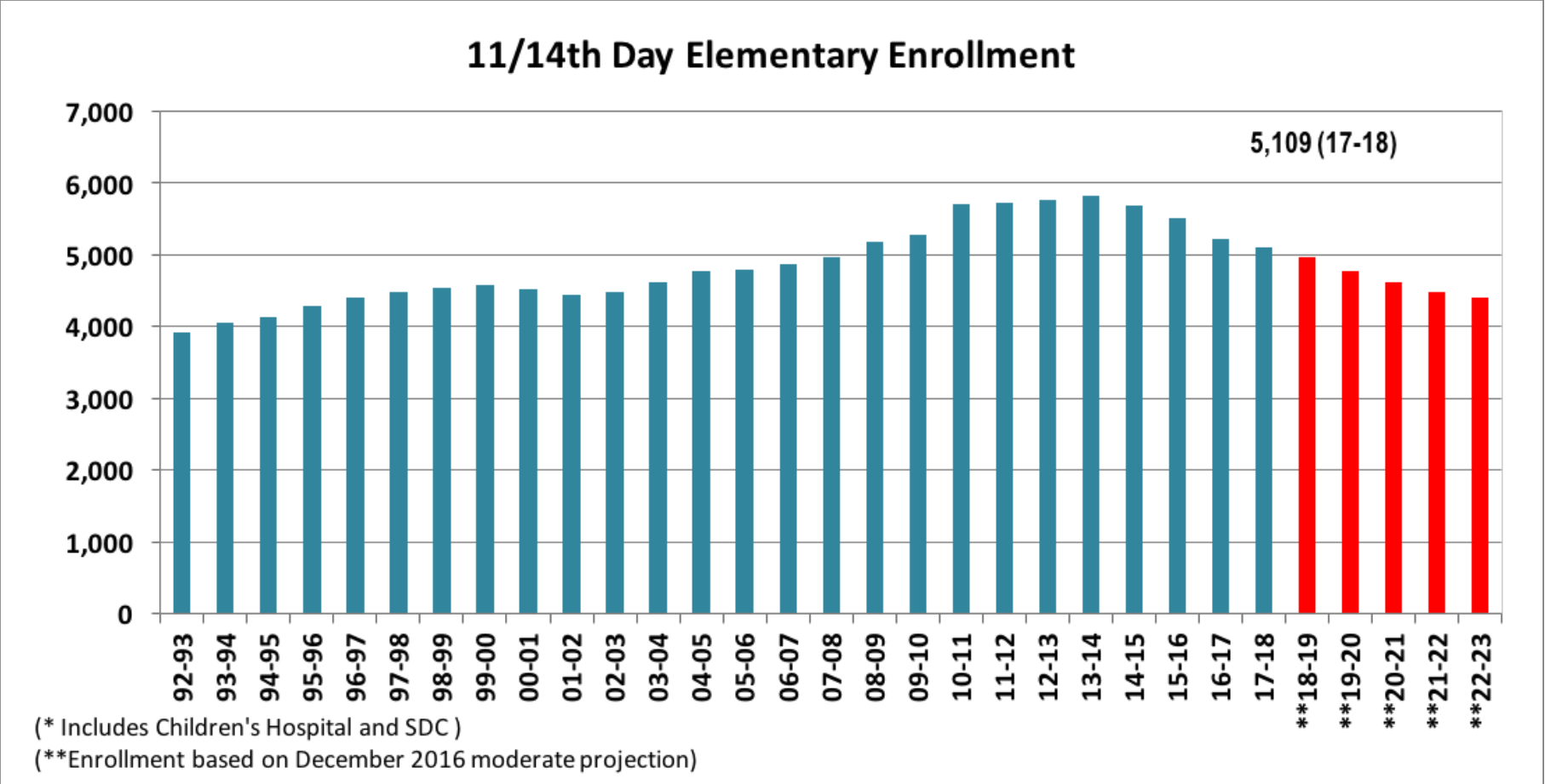
UPDATE: PAUSD Enrollment History

PAUSD Enrollment History and Projections

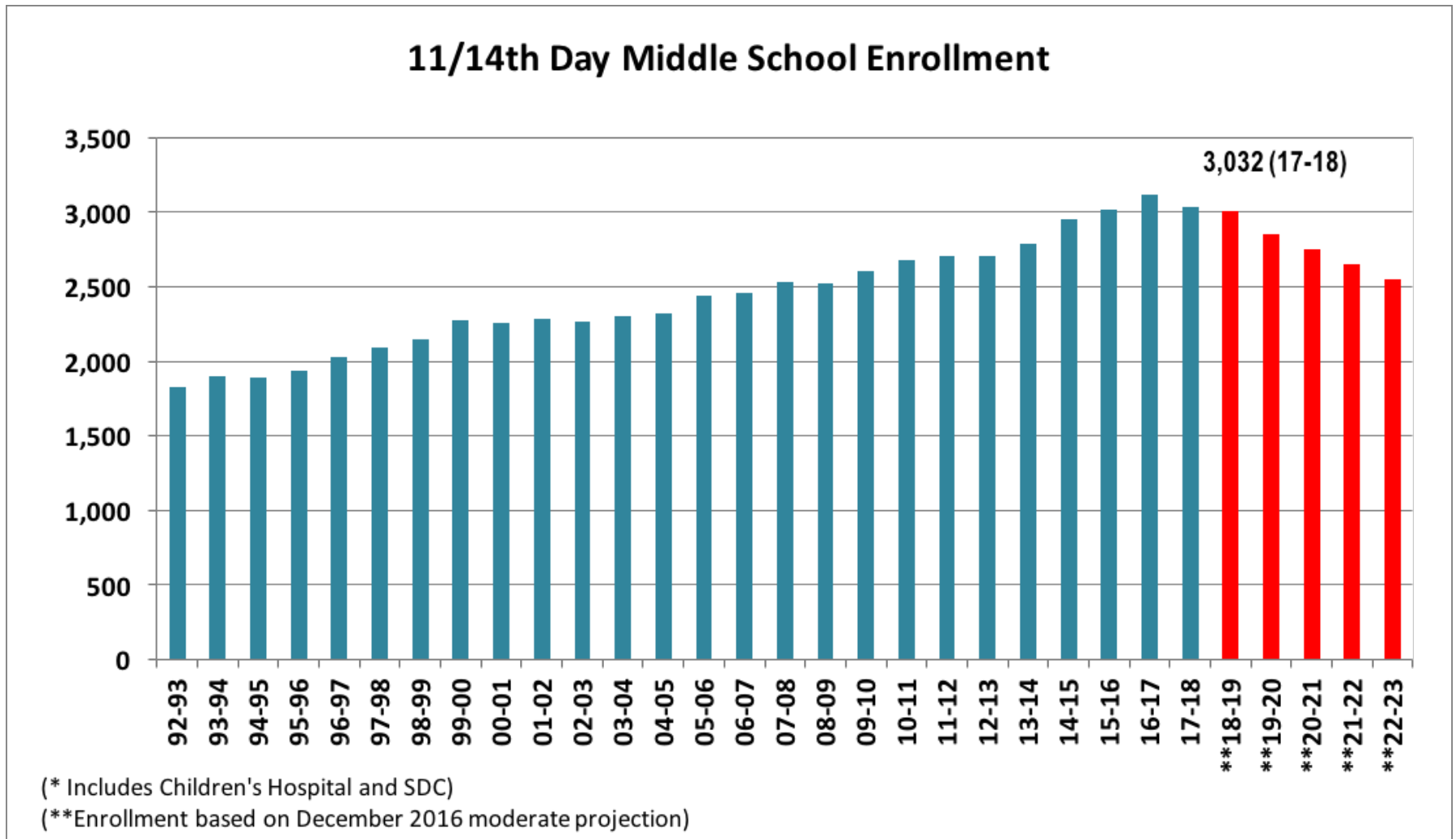
(Projections include Alta Vista, Children's Hospital, and Middle College)



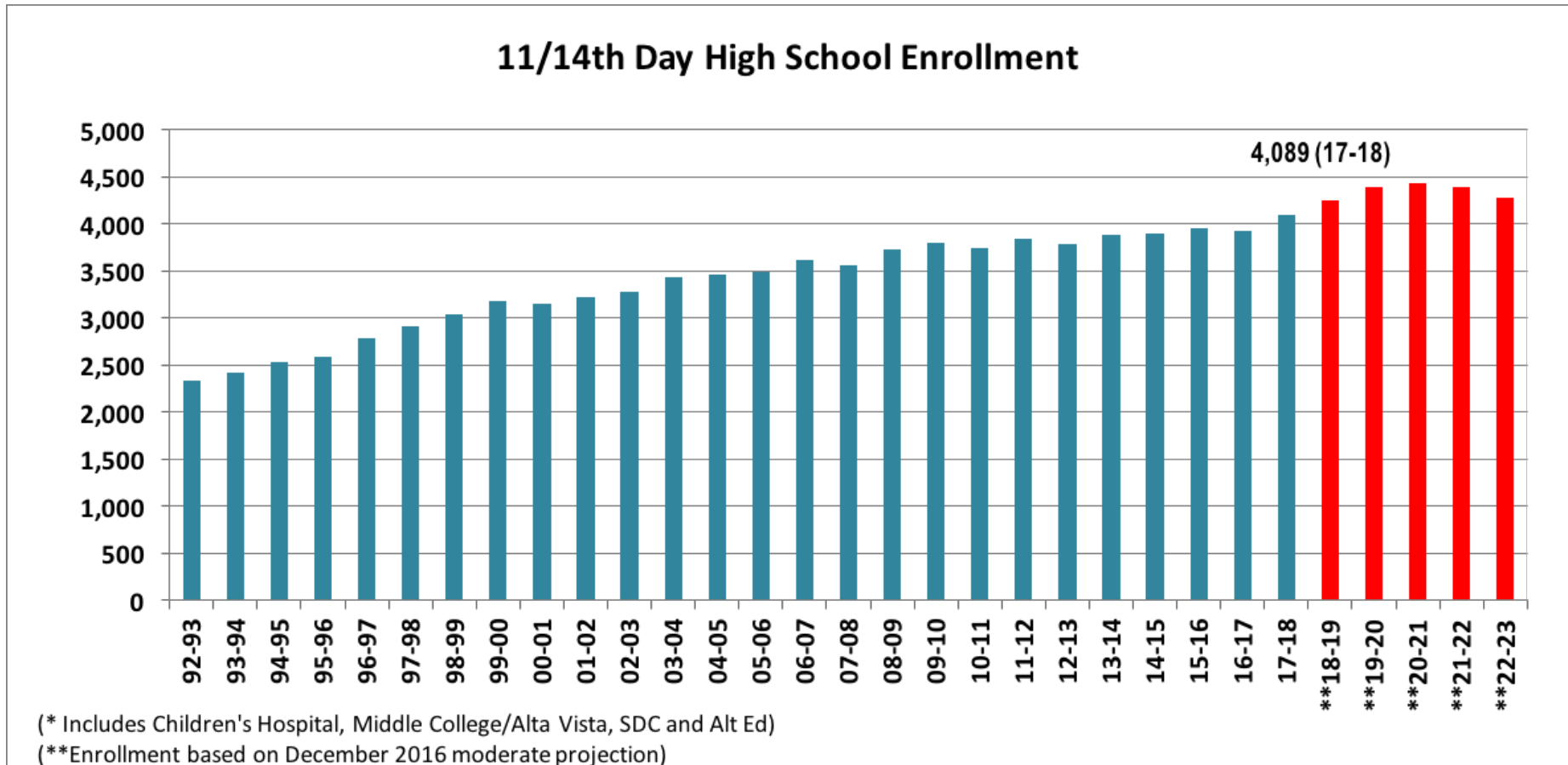
Elementary School 11th/14th Day Enrollment



Middle School 11th/14th Day Enrollment

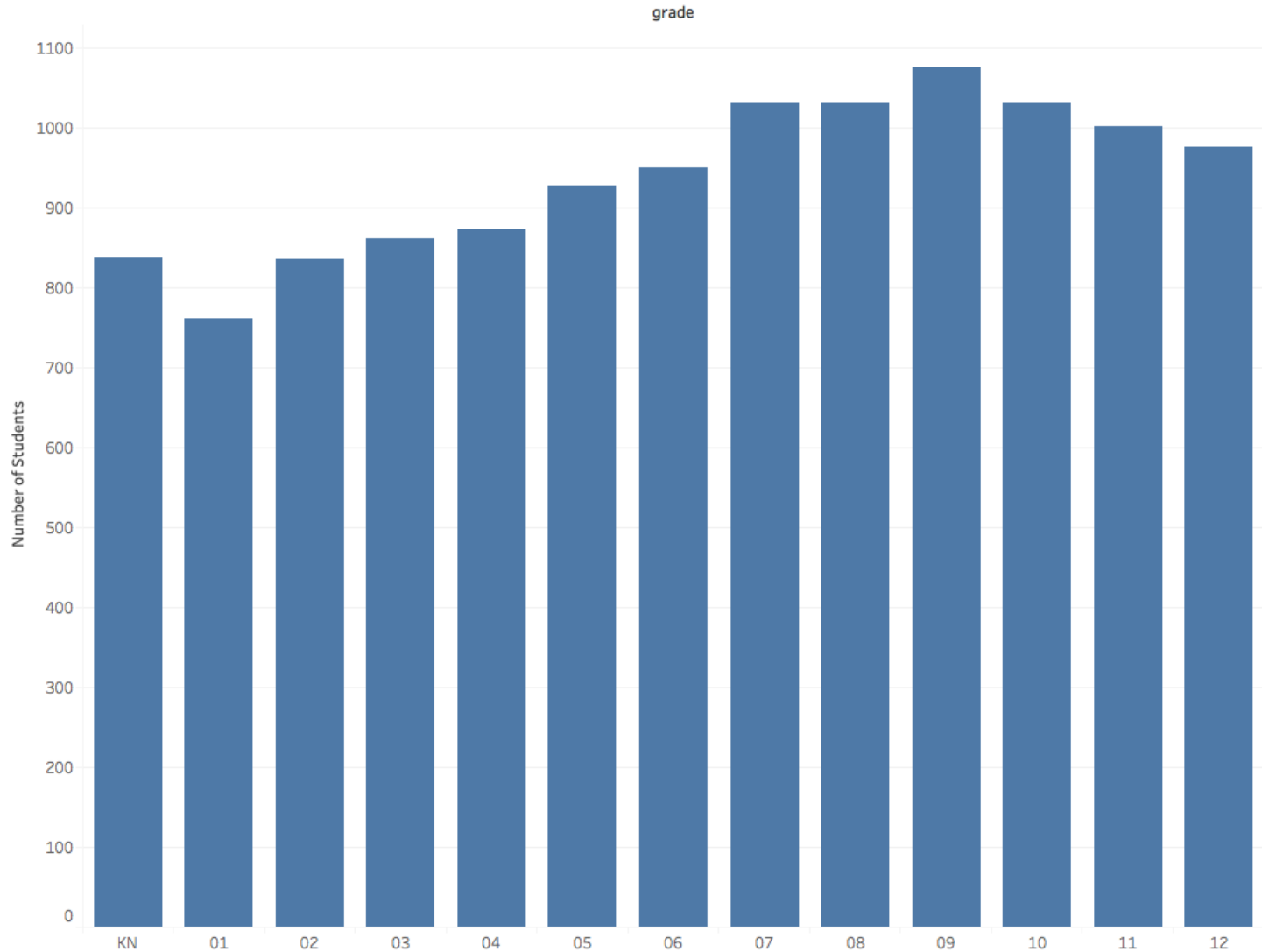


High School 11th/14th Day Enrollment



Current Enrollment by Grade Level

Current Enrollment by Grade Level



K-5 Class Size Average Comparison 2013-2014 through 2017-18

	13/14	14/15	15/16	16/17	17/18
K	20.9	20.3	19.7	19.4	19.0
1	21.8	21.4	21.0	20.5	21.5
2	22.5	22.4	21.7	21.0	21.8
3	22.9	22.3	21.5	21.3	22.0
4	22.9	23.5	22.9	21.7	23.0
5	23.6	23.6	24.0	23.0	22.0
Average Class Size	22.5	22.3	21.8	21.2	21.5

The average K-5 class size increased by 0.3 students from 2016-17 to 2017-18.

Available Elementary Classrooms (17-18)

▪ North

- Addison (1)
- Duveneck (7)
- Hays (6)

▪ South

- Fairmeadow (6)
- El Carmelo (1)

▪ West

- Barron Park (6)
- Briones (3)
- Escondido (1)
- Nixon (1)

Total 32 classrooms available

2015-16: 20 Classrooms

2016-17: 26 Classrooms

Elementary Summary

- Enrollment decline of 110 students
 - Demographer projected between 162 (mod) and 229 (cons) student decline for this school year
- There was an unexpected increase of 33 students in kindergarten
- Overflow data will be provided in late October
 - Continue to monitor space as it is available
- Demographer has projected a steady K-5 decline over the next four years

Grades 6-8

2017-18 Enrollment Summary

Grade	6	7	8	SAI	Alt. Ed.	Total
Total 17-18	950	1,029	1,028	NA	25	3,032
Total 16-17	1,029	1,006	1,039	15	25	3,114
Change	-79	23	11		0	-82

Note:

2015-16 6-8 Enrollment: 3,013

2014-15 6-8 Enrollment: 2,952

As of September 1, 2017

Middle School Summary

- Enrollment decline of 82 students
 - Demographer projected between a 2(mod) and 36 (cons) student decline for this school year
- Anticipate decline to continue as a result of fewer 5th grade sections in elementary
- Middle schools are currently at or very near capacity
- Demographer projects a steady grade 6-8 decline over the next four years

Enrollment Summary

Grades 9-12

Grade	9	10	11	12	SAI	Alt. Ed.	Total
Total 17-18	1,073	1,024	973	950	NA	69	4,089
Total 16-17	1,001	992	957	899	20	59	3,928
Change	72	32	14	51		10	161

Note:

2015-16 9-12 Enrollment: 3,961

2014-15 9-12 Enrollment: 3,895

As of September 1, 2017

High School Summary

- Enrollment increase of 161 students
 - Demographer projected a growth between 189 (mod) and 156 (cons) students for this school year
- Anticipate growth over the next three years as a result of the bubble entering high school
- High schools can accommodate this projected growth

Grade Span Growth Summary

Growth from 2016-17 to 2017-2018

Not Including Children's Hospital, Alta Vista, or Middle College

Grade	K-5	6-8	9-12	Total
2017-18	5,093	3,007	4,020	12,120
2016-2017	5,198	3,089	3,869	12,156
Growth	-105	-82	151	-36

Comparison with Enrollment Growth Forecast

VS.

14th Day Enrollment Growth

	K-5	6-8	9-12	TOTAL
Conservative	-229	-36	156	-109
Moderate	-162	-2	189	+25
Actual	-105 (less than moderate)	-82 (more than double conservative)	151 (close to conservative)	-36 (between conservative & moderate)

* DecisionInsite projections do not include Children's Hospital, Alta Vista, or Middle College

Middle School Average Class Size by Grade Level – Core & World Language

	6	7	8	World Language	Average School
Jordan	22.7	24.8	25.1	24.2	24.3
JLS	23.8	23.1	24.4	26.3	24.0
Terman	22.8	24.2	25.4	22.5	24.0
Average Grade	23.2	24.0	24.9	24.6	Table does not include PE

98.5% of Middle School Core* Classes
are at or below 30 students

Of the 540 core sections 8
sections have more than 30 students

*English, Mathematics, Science, Social Studies
and World Languages

High School Average Core Class Size by Grade Level & World Language

	9th	10th	11 th & 12th	Average School
Gunn English	23.7		27.5	25.4
Gunn Math	22.9	29.9	29.1	27.3
Gunn Science	23.8	26.4	25.5	25.2
Gunn SS	23.7	29.0	27.1	26.9
Gunn WL	-	-	-	24.2
Paly English	21.0	24.7	27.2	24.6
Paly Math	21.6	29.0	27.9	25.8
Paly Science	24.3	27.3	27.1	26.3
Paly SS	22.2	27.3	27.8	26.0
Paly WL	-	-	-	24.6

97.4% of High School Core*Classes
are at or below 32 students

Of the 739 core sections 19
sections have more than 32 students

*English, Mathematics, Science, Social
Studies and World Languages